

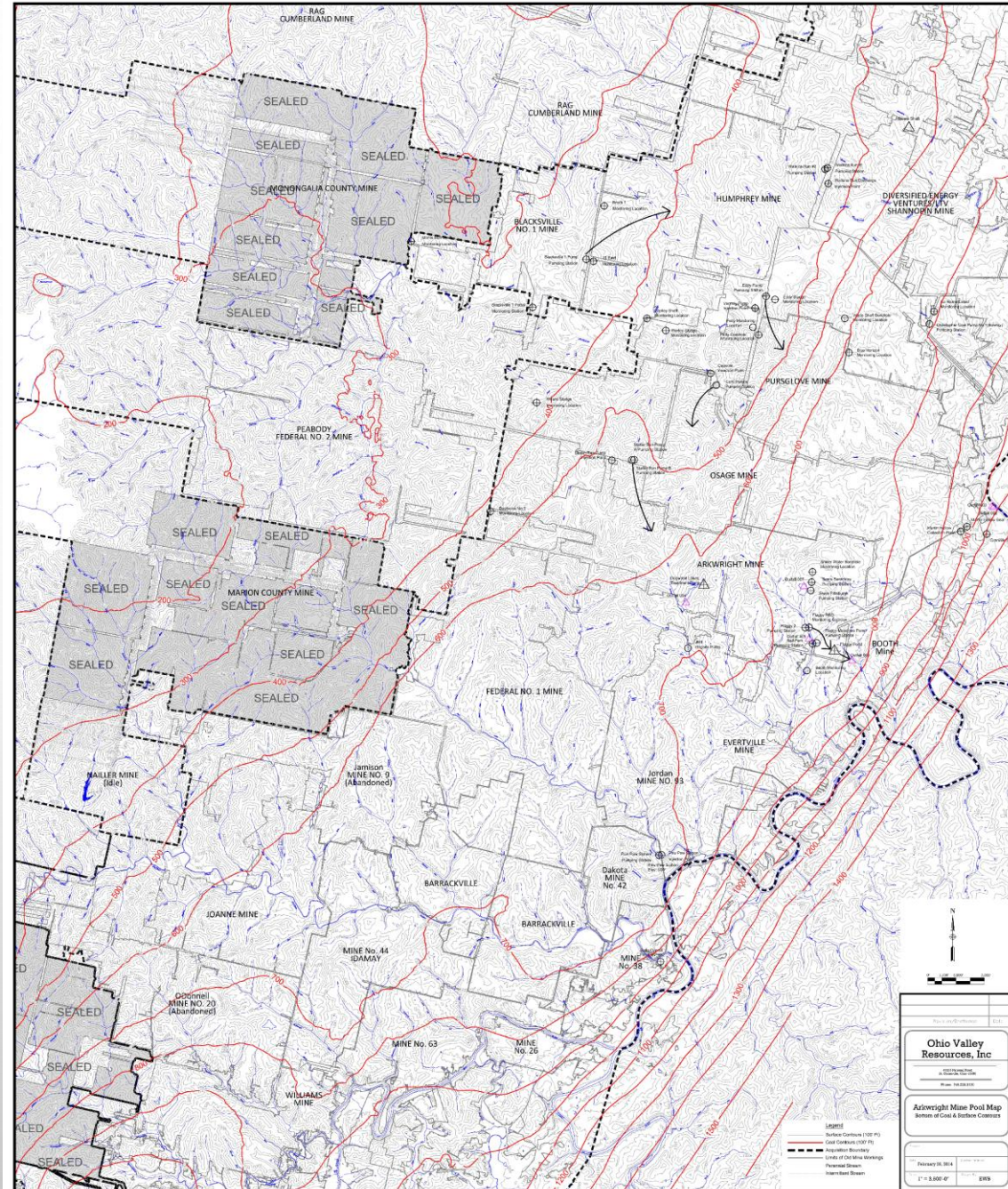
FAIRMONT AND MORGANTOWN MINE POOL MANAGEMENT

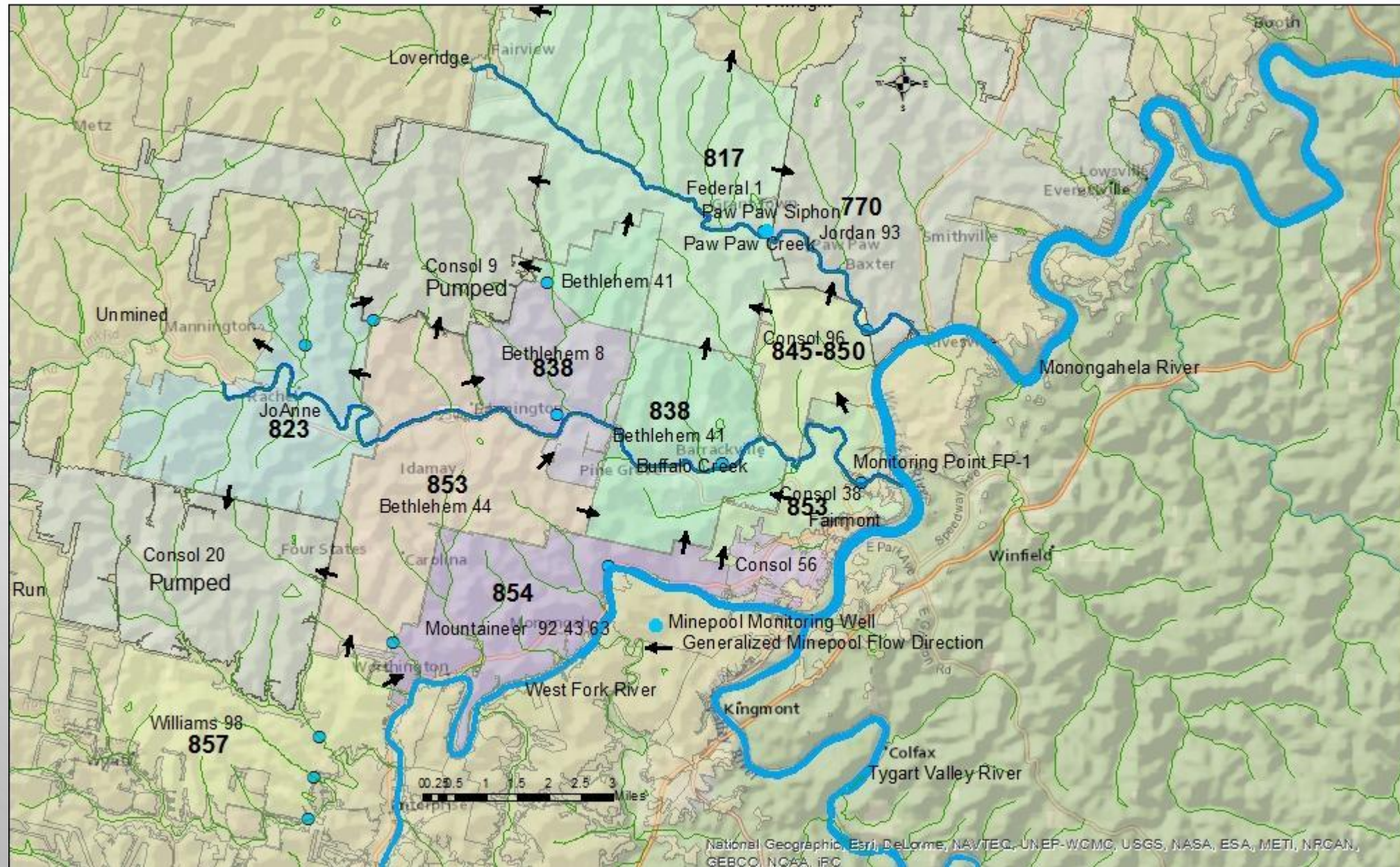
AMERICAN
CONSOLIDATED
NATURAL
RESOURCES, INC.



PITTSBURGH COAL MINING HISTORY 148,000 ACRES

- Fairmont Pool – North of West Fork River and West of the Monongahela River
 - Four States (1910 – 1984)
 - Idamay Mine (1915 – 1974)
 - Dakota Mine (1921-1978)
 - Williams Mine (1949 -1979)
 - Harrison County Mine (1950 – Active)
- Morgantown Pool - North of Paw Paw Creek and West of the Monongahela River
 - Jordan Mine (1920 – 1978)
 - Federal #1 Mine (1903 – 1984)
 - Arkwright Mine (1948 – 1998)
 - Osgage (1920 – 1995)
 - Pursglove Mine (1910 – 1994)
 - Humphrey Mine (1956 – 2002)
 - Marion County Mine (1956 – Active)
 - Blacksville #1 (1970 – 1992)

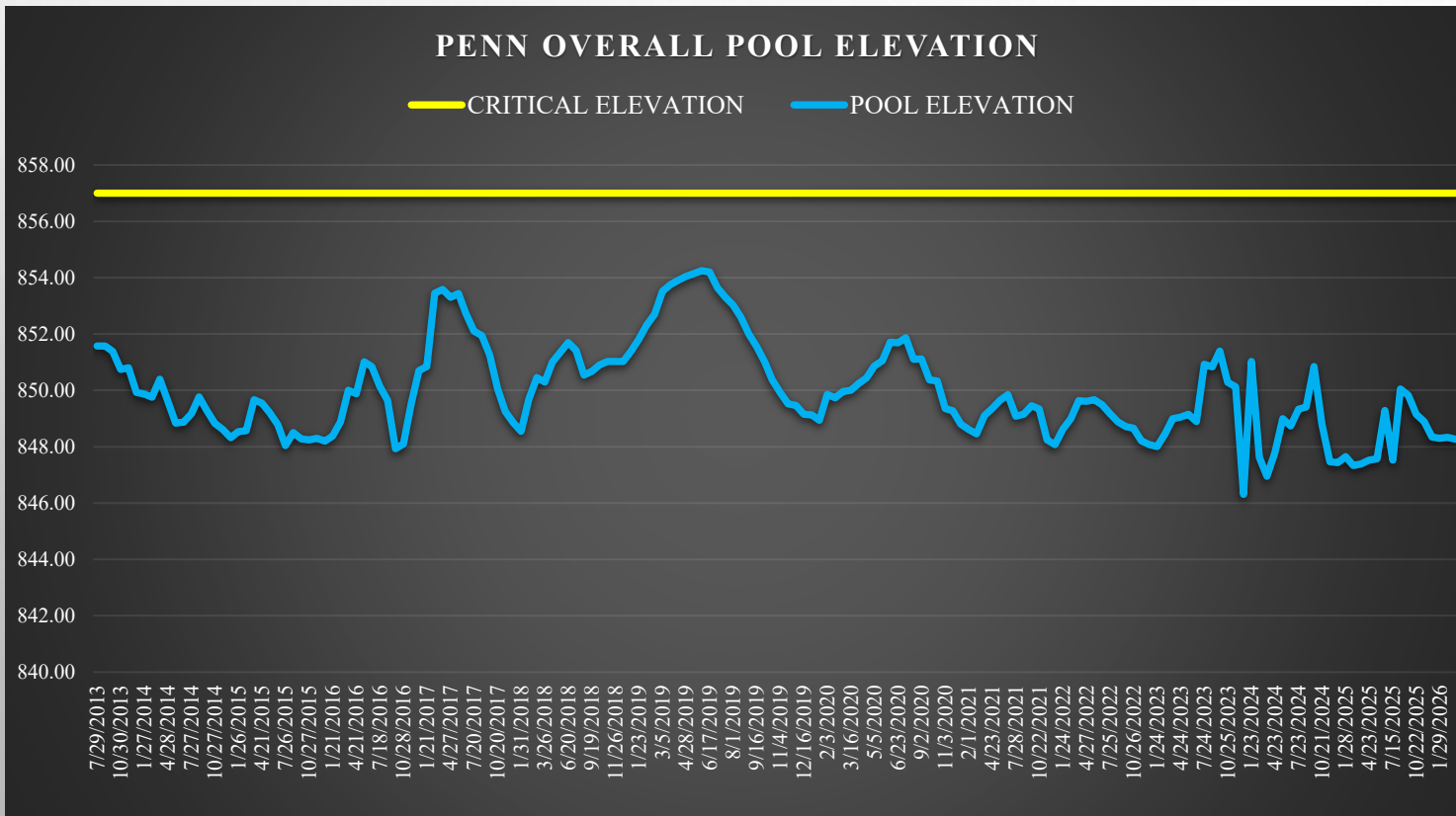




Typical hydraulic head values shown in bold numbers for individual sub-pools

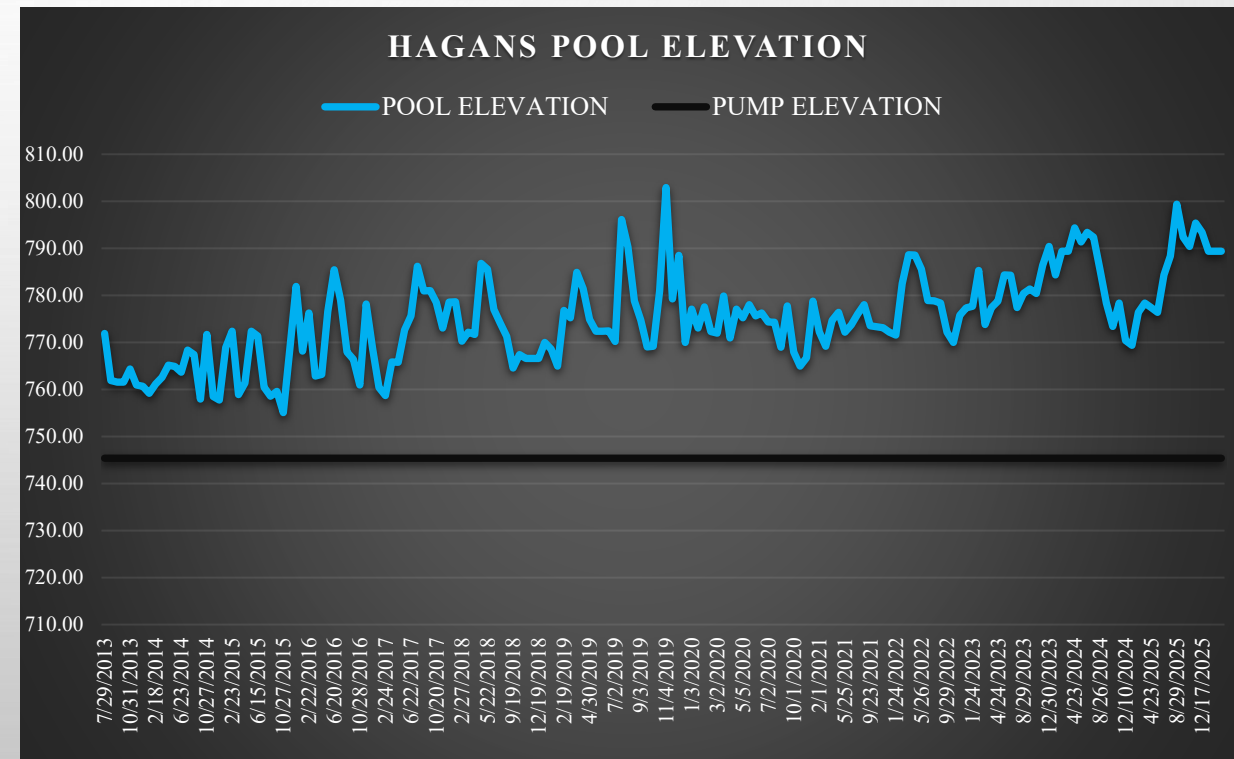
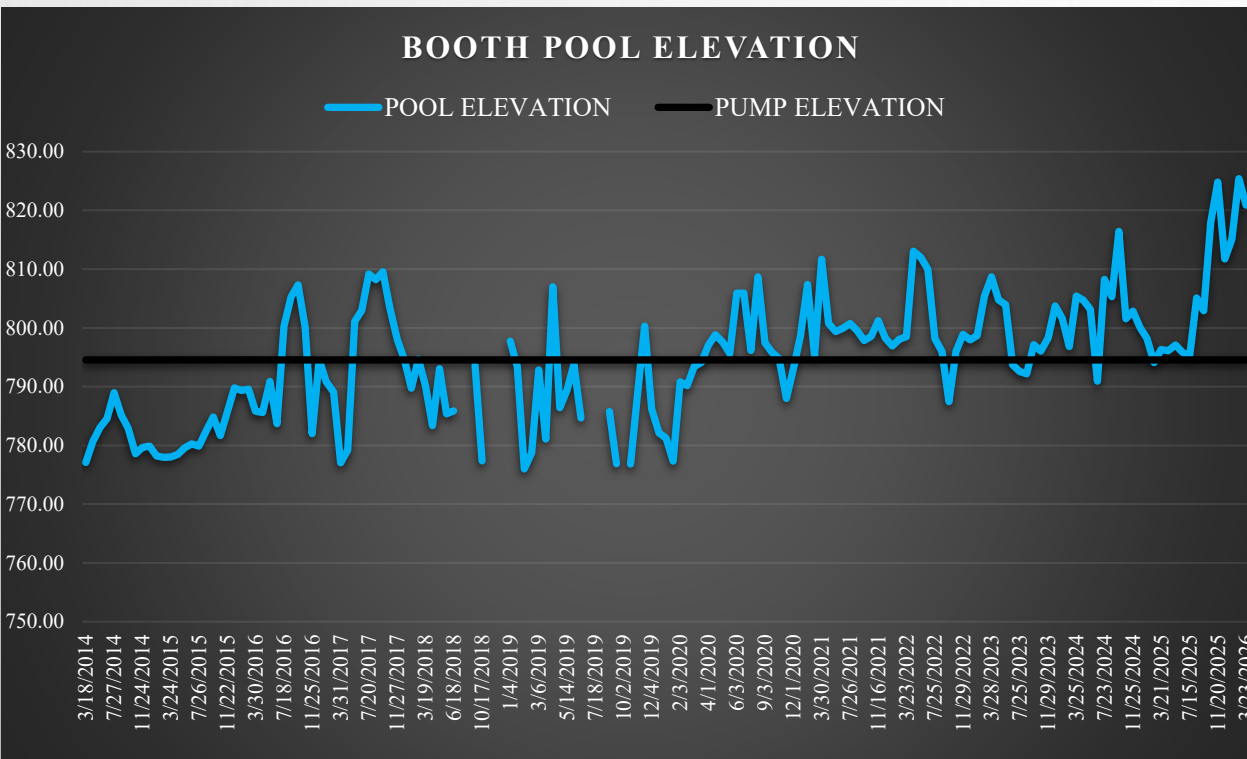
FAIRMONT POOL MANAGEMENT

- Compliance Elevation of 857' at the Penn Overall Monitoring point maintained to prevent potential “breakout” at 860’.
- Consolidation Coal Company installed the Paw Paw Siphon, designed by the late Bruce Leavitt. Later replaced by 2,000 GPM electric deep-well pump.
- Pumps mine water from the Dakota Mine (Fairmont Pool) and discharges into the Jordan Mine (Morgantown Pool).



JORDAN - BOOTH MINE POOL

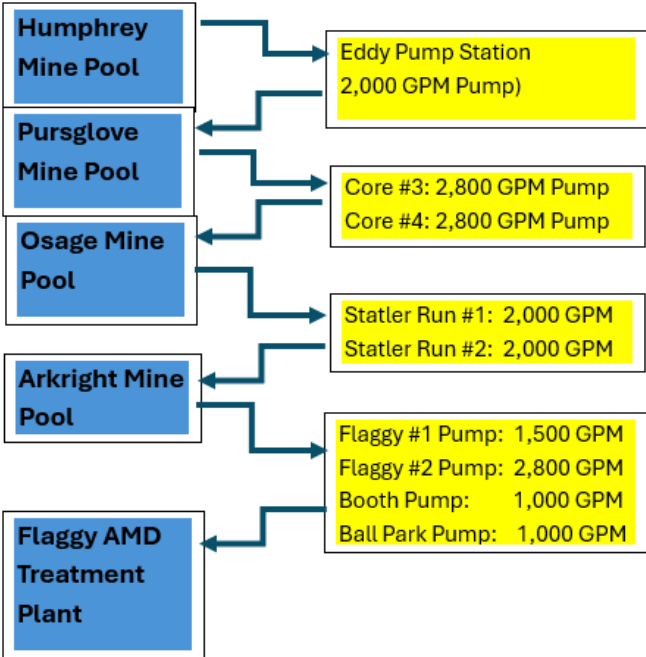
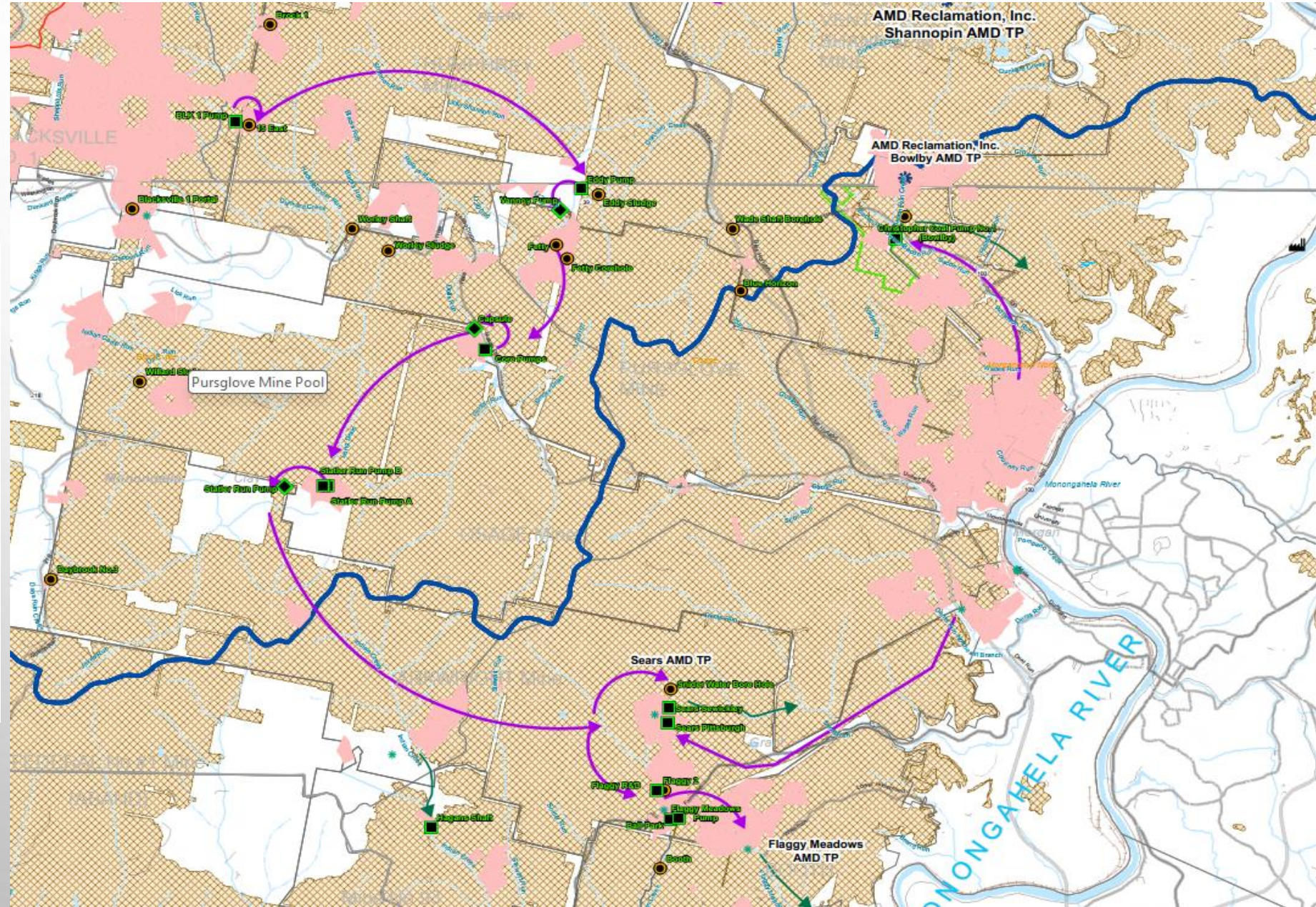
- Two 2,000 GPM pumps in the Hagan's shaft pump water from the Jordan Mine to the Dogwood Lake AMD Treatment Facility
- The Booth Mine is hydrologically connected to the Jordan Mine (most likely Arkwright too)
 - The 1,000 GPM Booth Pump conveys water to the Flaggy Meadows AMD Treatment plant



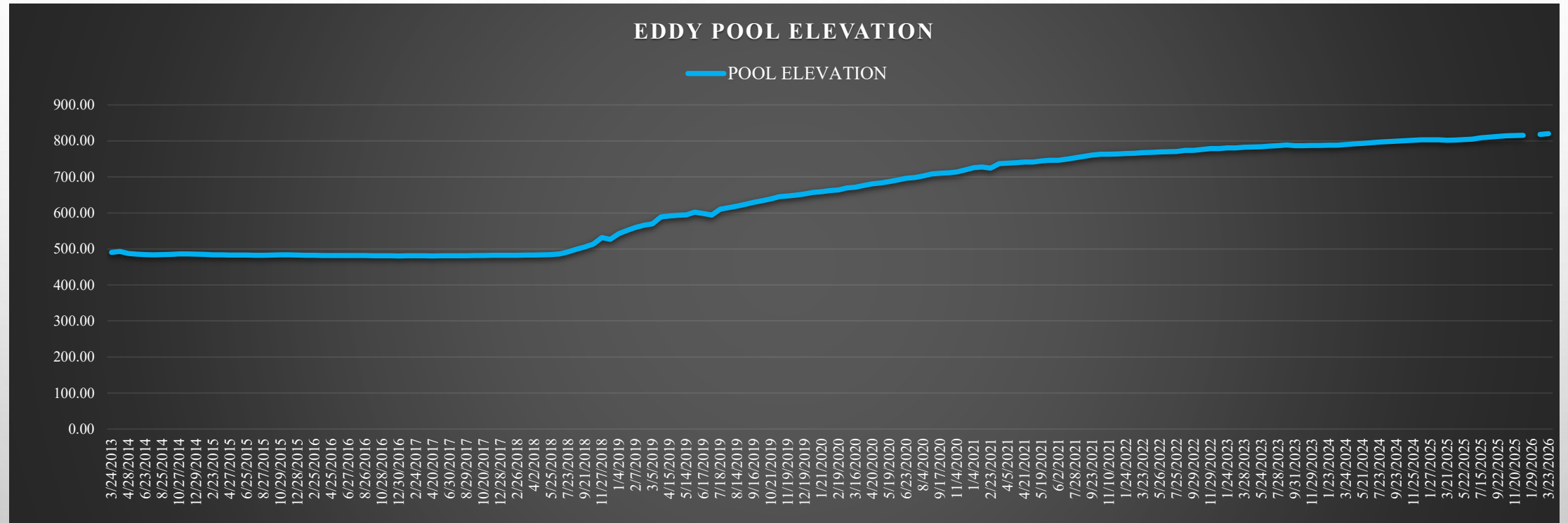
2015 WVDEP ISSUED DIRECTOR'S ORDER FOR ACNR TO UPDATE PHCS

- OFFICIALLY MANDATED THE “CARICO REPORT.”
 - MONTHLY SPREADSHEET SUBMITTED TO DEP SHOWING VOLUMES OF WATER PUMPED FROM THE FAIRMONT AND MORGANTOWN POOLS. ALSO REPORTS WATER LEVEL ELEVATIONS IN VARIOUS SUB-POOLS.
- PREDICTED WATER MANAGEMENT POST-SEWICKLEY SEAM MINING
 - ONCE ALL THE MORGANTOWN MINE POOLS BEGIN TO FLOOD WHEN PROTECTIVE PUMPING CEASES, IT IS EXPECTED THAT THE MINES WILL COALESCE TO FORM ON LARGE POOL THAT COULD BE CONTROLLED AT A SINGLE WITHDRAWAL PUMP IN ARKWRIGHT MINE,
- THE ANTICIPATED MINE POOL WATER CHEMISTRY OF CLOSED, SEALED FLOODED COAL MINES IMPROVES WITH TIME AFTER FLOODING. IN WHICH MINE DRAINAGE BECOMES NET ALKINLINE AND A PEROXIDE-BASED SYSTEM CAN BE IMPLEMENTED.

MORGANTOWN MINE POOL PUMPING (PRE-2018)

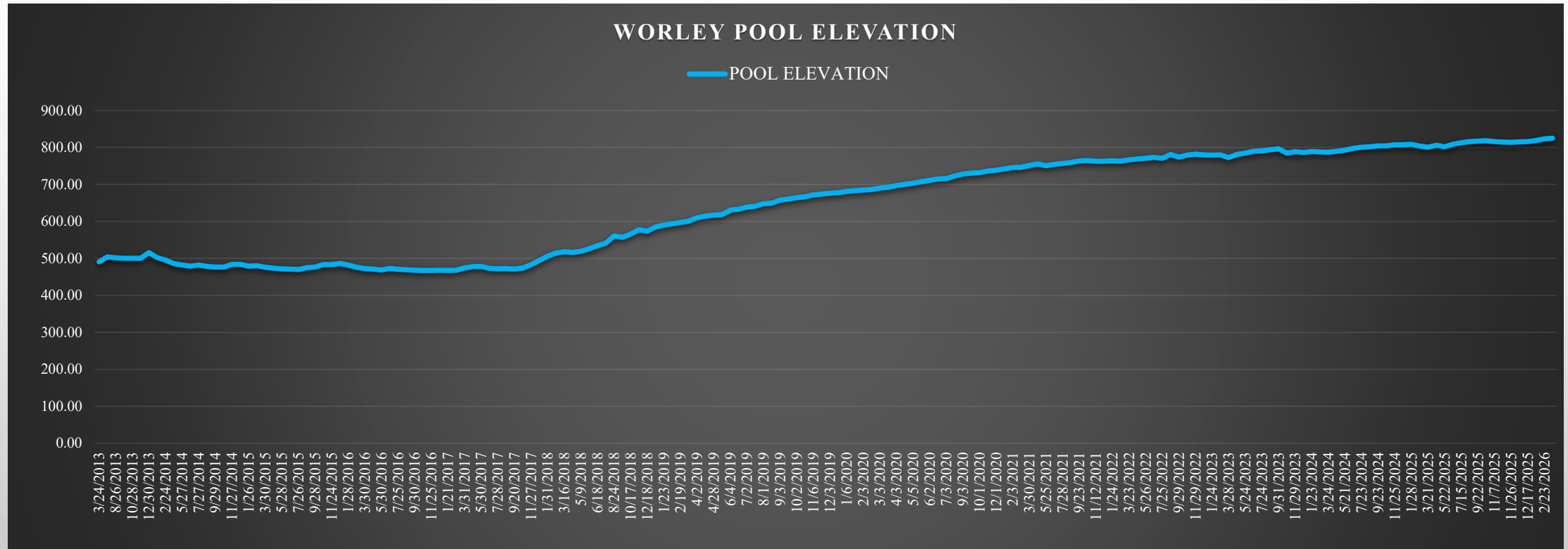


HUMPHREY MINE POOL



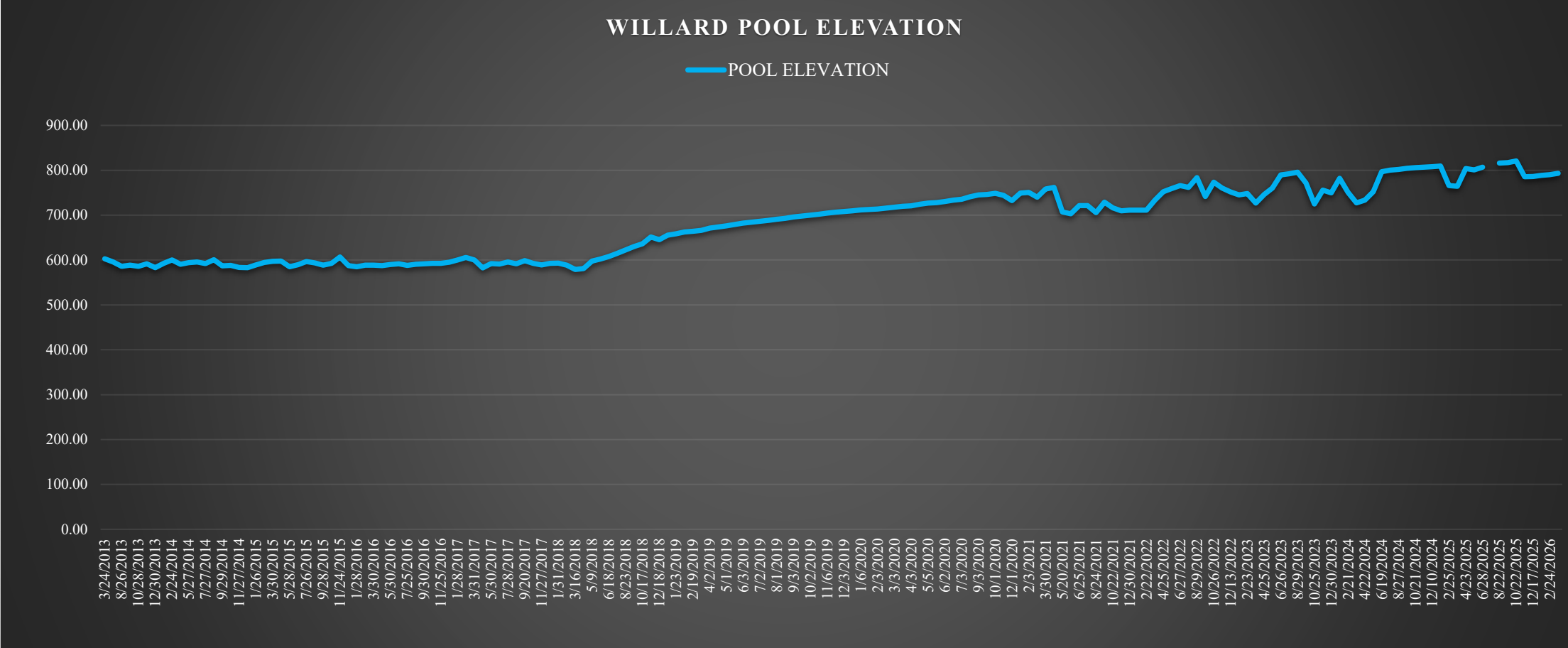
- Quit Pumping Humphry Mine Pool June 2018
- Pool started spilling over to Pursglove in January 2023 @ elevation of 800'

PURSGLOVE MINE POOL



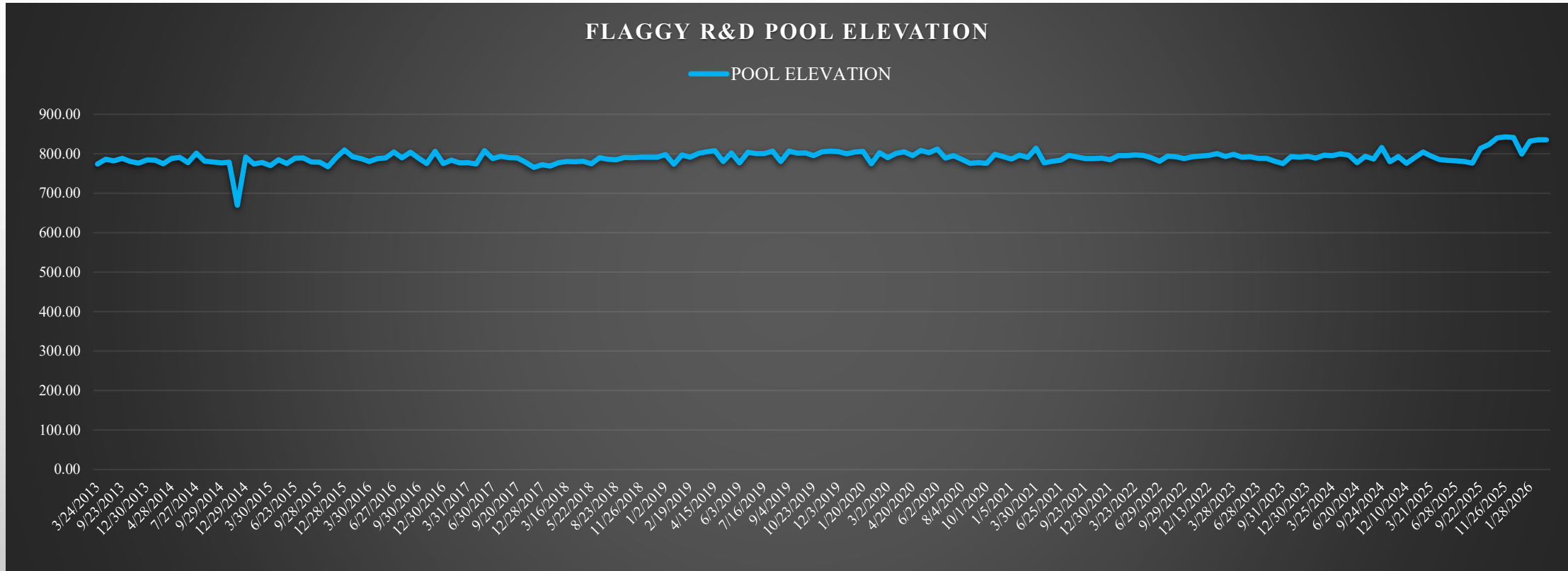
- Stopped pumping Pursglove December 2017
- Started to spill over into Osage Mine Pool December 2023 @ 800'

OSAGE MINE POOL



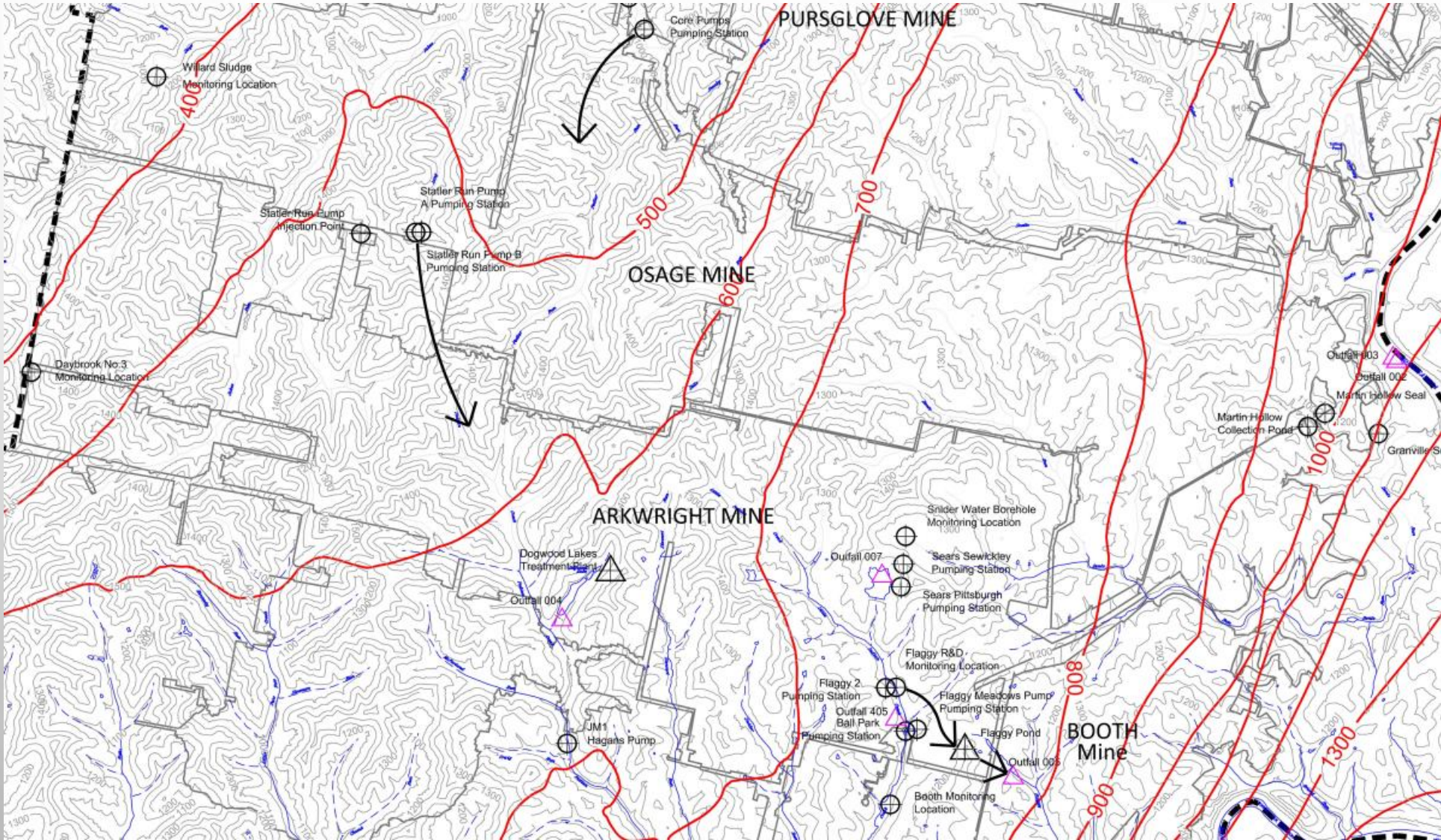
- The Statler Pumps in the Osage Mine Pool were turned off in December 2018
- Remained off till October 2020
- Osage Mine Pool is pumped down to keep a larger bucket for Humphry and Pursglove to spill over in to

ARKWRIGHT MINE POOL



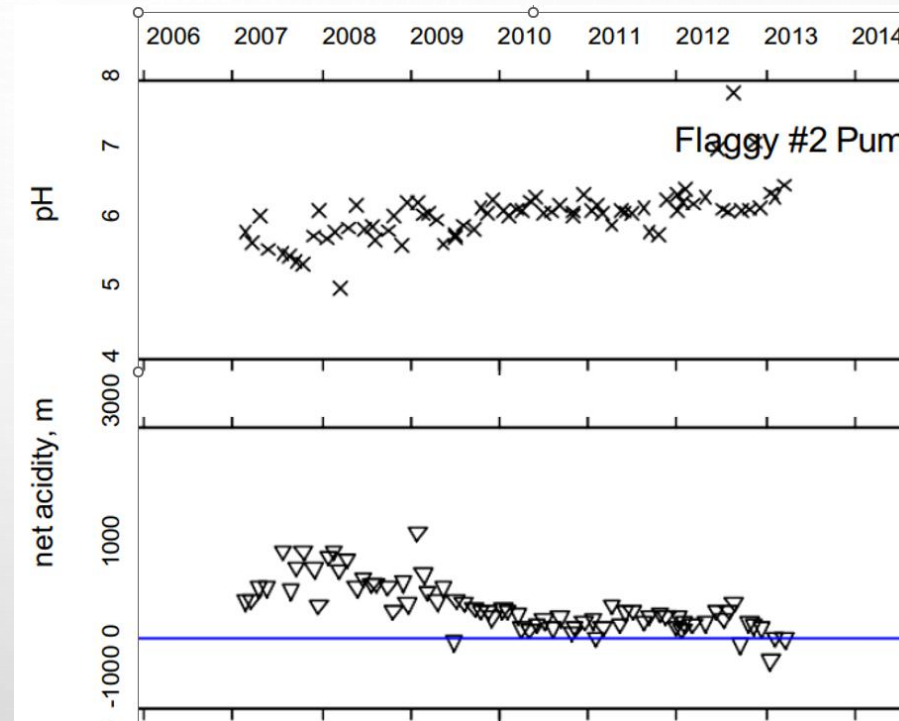
- Arkwright Mine Pool is maintained at an elevation of 800'
- Recently turned off all pumps
- Arkwright Mine Pool Flowed back into Osage at an elevation of 830'

MORGANTOWN MINE POOL



MORGANTOWN MINE POOL WATER QUALITY

- As the mine pools filled up, Water Quality Improved
- Mine pool went from acidic to net alkaline
- Flaggy Meadows Water Treatment Plant has been in operation since 2000.
- Utilized a recirculating lime slurry water treatment till 2025.
- With a neutral pH and net alkaline water, Flaggy switched water treatment to Hydrogen Peroxide (Thanks to Brent Means and AMD Industries).



FLAGGY MEADOWS WATER TREATMENT FACILITY



SIGNIFICANCE OF PHC FINDINGS

- ELIMINATE UNNECESSARY PUMPING
 - REALIZED SAVINGS
 - ELIMINATED TWO DEEP-WELL PUMPS IN THE HUMPHREY AND PURSGLOVE MINE POOL
 - REDUCED ELECTRICITY COSTS AND MAINTENANCE BY \$500,000
 - REDUCED WATER TREATMENT COST
 - WENT FROM USING A TRACTOR TRAILER LOAD OF HYDRATED LIME EACH DAY AT FLAGGY MEADOWS TO A LOAD OF HYDROGEN PEROXIDE EACH MONTH.
 - OVER \$1.5 MILLION DOLLAR SAVINGS EACH YEAR
 - FUTURE POTENTIAL OPTIONS
 - ELIMINATE OSAGE MINE POOL PUMPING AT STATLER
 - INSTALL NEW PUMPING SYSTEM IN A DEEPER SECTION OF THE ARKWRIGHT MINE POOL AT DOGWOOD LAKES TO ELIMINATE ALL WATER TREATMENT FROM THE MORGANTOWN POOL