

Dart TANDEM DRIVE 85-TON END DUMP TRUCK

- Narrow width
- Low, loading height
- Low ground pressure tires
- 800 HP Mechanical Power Train
- Safe Reliable Performance
on long 14% grades
- Proven reliable concept
and components

RESULT
LOWER COST
PER TON



Dart
TRUCK COMPANY
A DIVISION OF **PACCAR**

1301 North Chouteau Trafficway • P.O. Box 321 • Kansas City, Missouri 64141 • 816-483-7679

West Virginia Truck Sales, Inc.

P.O. Box 10238, Station C • Tappers Creek Road off I-77 N • Charleston, West Virginia 25312 • 304-984-0081

Green

Summer 1981

L a n d s



W V S M R A

1966 1981

Robins and Associates

Mine Planning and Design Services

P.O. Box 170
Mechanicsburg, PA 17055
(717) 763-5651

1510 Kanawha Blvd. E.
Charleston, WV 25311
(304) 343-1102

P.O. Box 468
Bigler, PA 16725
(814) 857-7648



Robins and Associates is pleased to announce the relocation of our offices to 1510 Kanawha Blvd., East., Charleston, West Virginia. As a result of increased staffing and capabilities, it has been necessary to move to larger offices to more effectively serve our clients. Our highly qualified staff continues to offer a wide range of services to the mining industry. Services range from reserve evaluations to environmental baseline studies to detailed mine layout and design to reclamation engineering. Let us solve your next engineering problem.

**Need Hydro Seeding & Mulching of Surface
Mined Areas, Silt Ponds, Mine Mouths Haul
Roads, Etc. ???**

Let
Penn Line Service, Inc.
give you an estimate

Call Our Toll Free Number 800—245-6800

Ask For Ron Hill



Penn Line Service, Inc.
Scottsdale, Pennsylvania 15083

Index to advertisers

| | |
|---|--------------|
| ARMCO | 5 |
| Beckwith Machinery | 57 |
| Cecil I. Walker Machinery | 4 |
| Celanese | 46 |
| Chamberlaine & Flowers | 48 |
| Cline Truck Sales | 59 |
| Cummins Engines | 31 |
| D & D Reclamation | 58 |
| Esmer & Associates | 60 |
| Fairchild | 14 |
| Flat Top Insurance | Inside cover |
| Ingersoll Rand | 47 |
| J. D. Hinkle & Sons | 49 |
| L. B. Smith | 30 |
| McDonough Caperton Shepherd Group | 13 |
| Miller & Miller | 56 |
| Mountaineer Euclid | 43 |
| Penn Line Service | 2 |
| Ray C. Call | 42 |
| Rish Equipment | Inside cover |
| Robins & Associates | 2 |
| Technical Testing Laboratories | 49 |
| Tire City | 49 |
| West Virginia Tractor | 12 |
| Willco Reclamation | 58 |
| Worldwide Equipment | 32 |

Green Lands

Volume 11 number 2

Forward

This edition of *Green Lands* is devoted to celebrating the fifteenth anniversary of the West Virginia Surface Mining and Reclamation Association, which has largely been responsible for the health and survival of the surface mining and reclamation industries in the Mountain State. The pictures contained herein represent a cross section from the history and major activities of the Association. Many of the people depicted on these pages are the shakers and movers which have kept the industry on its feet through the trying times of the last decade and a half. Everyone who earns a living from the mining of coal in West Virginia is in their debt. We would also like to take this opportunity to thank those companies who have seen fit to support *Green Lands* through advertising, thus enabling us to bring the story of West Virginia surface mining and reclamation to those who need to hear it most.



Editor
R. Daniel-Miller

Business
Mary Ann Steele

Circulation
Brenda Garnett

Green Lands is a quarterly publication of the West Virginia Surface Mining and Reclamation Association, with offices at 1624 Kanawha Boulevard, East, Charleston, West Virginia, 25311 telephone (304) 346-5318

President—Benjamin C. Greene
Asst. to President—Patty Bruce
Vice President—William B. Raney
Chairman of the Board—Lawrence A. Streets
1st Vice Chairman—William C. M. Butler, III
2nd Vice Chairman—Donald R. Donell
Secretary/Treasurer—Frank D. Jennings
Associate Division Chairman—James R. White

Directors

| | |
|---------------------|--------------------|
| D. E. Adkins | J. C. Justice |
| J. W. Anderson | D. M. Keating |
| W. E. Cline | R. L. Kosnoski |
| C. E. Compton | M. A. Messinger |
| Carl DelSignore | R. C. Miser |
| T. L. Dotson | D. T. Morrison |
| J. R. Fairchild | J. M. Poindexter |
| L. W. Hamilton, Jr. | W. S. Ritchie, Jr. |
| J. H. Harless | R. C. Stevens, Jr. |
| Gerald Hartley | R. H. Tinsley |
| B. W. Harvey | R. N. Welch |
| T. W. Hylton | |
| R. H. Jeran | |
| C. T. Jones | |

Honorary Member
F. B. Nutter, Sr.

*Exchange
Before
Failure*

Like a pen that eventually wears out, your machinery faces the same fate. So before failure strikes be prepared by exchanging old components for new ones through the Exchange Before Failure Program from Walker Machinery.

For a set price with a guarantee you'll save downtime and money with this quick and easy replacement program. At Walker, we exchange components like turbochargers, track rollers, transmissions, brakes, pumps and many more, before failure occurs.

With the Exchange Program you'll know the cost on pre-planned replacement and avoid the need for replacing other parts due to unexpected failure.

You know how frustrating it is to write with a dry pen, and how costly it is to have a component break down. So be prepared before failure strikes with the Exchange Before Failure Program from Walker Machinery. Make this program a cornerstone of your preventative maintenance.

Call Rusty Stone at Walker for details. 949-6400.



Caterpillar, Cat and  are Trademarks of Caterpillar Tractor Co.

Charleston, WV 304/949-6400 Beckley, WV 304/253-2706 Parkersburg, WV 304/485-4547 Summersville, WV 304/872-4303 Logan, WV 304/752-0300

You can have
a lot more
confidence
in the results
when you know
who's supervising
the work.

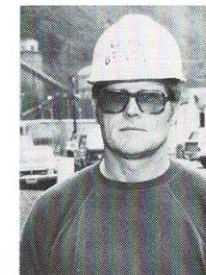
Armco Mining Construction Company

Whether you're getting a tune-up on the family car or constructing the world's largest settling pond, you just can't help but have more confidence in the outcome when you know who's supervising the job. Take a look. You'll probably recognize most of our field supervisors. They have been around Virginia, West Virginia and Eastern Kentucky a long time overseeing coal mine construction of all kinds.

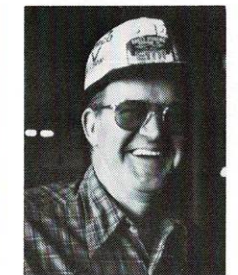
Heavy grading, road building, portal construction, settlement ponds, refuse disposal site preparation, diversion ditches, pipe laying, coal strip reclamation—all of these and more have been ably handled by our experienced field supervisors for years.

Next time you're letting bids or looking for a quick solution to a construction problem around your coal operation, give us a call at 304/347-2180. We would like a chance to show you our field people are just as good as ever; or maybe even a little better. Armco Mining Construction Company, Division of Armco Material Resources, Dept. MC-20, 1600 Fourth Avenue, Charleston, West Virginia 25312.

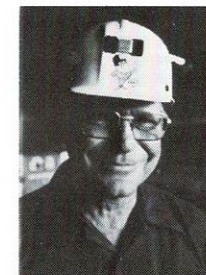
Armco Mining Construction Co.
Job Foremen



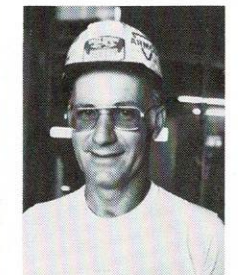
Carl Bragg



Nick Jackson



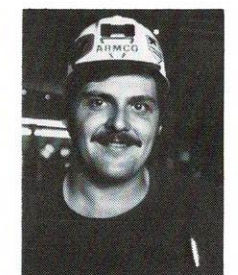
Charles Goodall



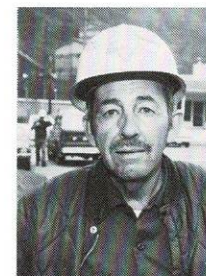
John Massey



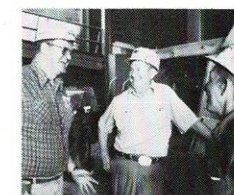
Roosevelt Arthur



Ron Jackson



Charles Ballew

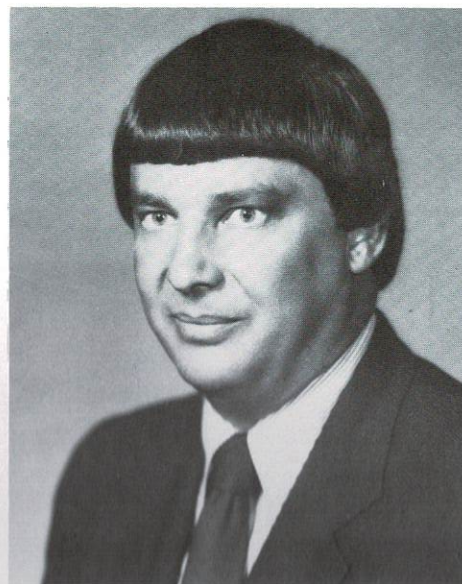


Member ABC

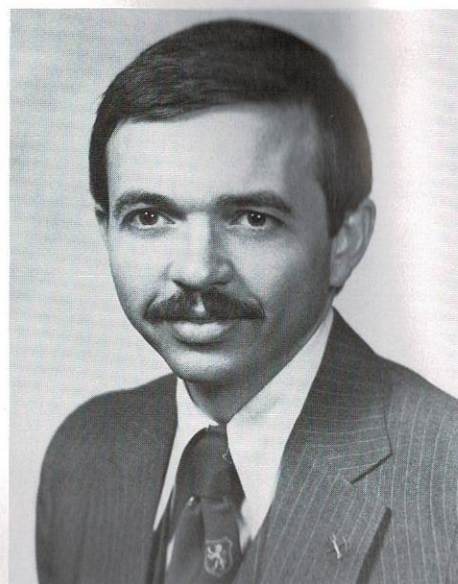


**Armco
Material
Resources**





Ben Greene, President



Bill Raney, Vice President

The West Virginia Surface Mining

The West Virginia Surface Mining and Reclamation Association is the largest trade organization of its kind in the nation, representing more than 300 companies, and thousands of individuals involved directly and indirectly with the surface mining of coal.

The organization was founded in 1966 to serve as spokesman for the industry in West Virginia, and to assist member companies in complying with the State's constantly evolving mining and reclamation laws. It has been quite successful on both fronts.

One trait common to the handful of companies that formed the WWSMRA was a sense of responsibility to the communities in which they lived and worked. A major initial task of the fledgling Association was to transmit that sense of responsibility to the rest of the surface mining industry. The 1981 membership roll, and the nationwide respect for West Virginia operators are testimonies to the success of that effort.

The Association began with a small staff and large ambitions. The original staff numbered just two. Patty Bruce was hired as secretary, and remains with the Association today, though her responsibilities have grown accordingly with the organization's concerns and demands. O. V. "Dick" Vande Linde

was hired as executive director at the same time.

Vande Linde was experienced in both government and industry, and was known as an innovator. As such, he proved to be the perfect choice to lead a group of mining companies interested in a reasonable balance between environmental protection and energy production.

While a major effort has been devoted to getting its story across to the West Virginia public, the Association has also directed considerable energy to technological development. Member companies are credited with developing and perfecting the two most innovative surface mining techniques of the 1970's, steep slope haulback and mountaintop removal.

During the early 1970's, when the industry faced the distinct threat of legislative abolition, the Association was obliged to lend more emphasis to public relations and lobbying efforts. Again, the organization was fortunate and wise enough to tap exactly the type of leadership it needed.

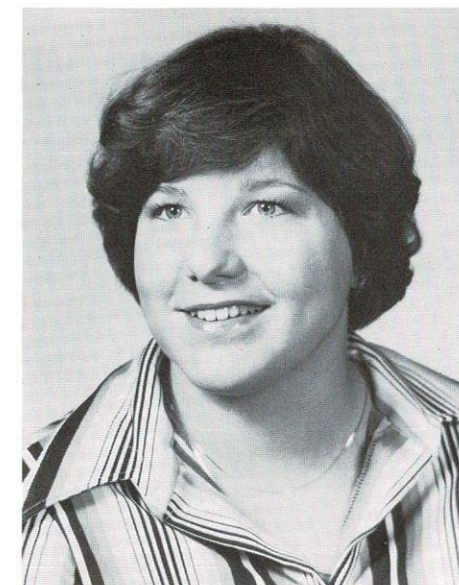
Ben Lusk was hired in 1971 in a public relations capacity, and, a year later, was named executive director. His promotional and organizational abilities were a major factor in the successful



Patty Bruce, Assistant to the President



Mary Ann Steele, Business Manager



Brenda Garnett, Secretary

and Reclamation Association

Association effort to get the facts to a public which had been buried under an avalanche of anti-industry propaganda.

With the passage of national surface mining legislation in 1977, the emphasis of the Association again shifted. The transition from state to federal regulation proved to be at least as cumbersome and difficult as feared, but once again the WWSMRA mustered the talent necessary to meet the challenge. Ben Greene was hired in August 1977, the same month in which President Carter signed the Surface Mining Control and Reclamation Act into law.

His long career with the West Virginia Department of Natural Resources gave him an insight into mining regulation which was and is second to none, a fact well recognized in industry and government circles.

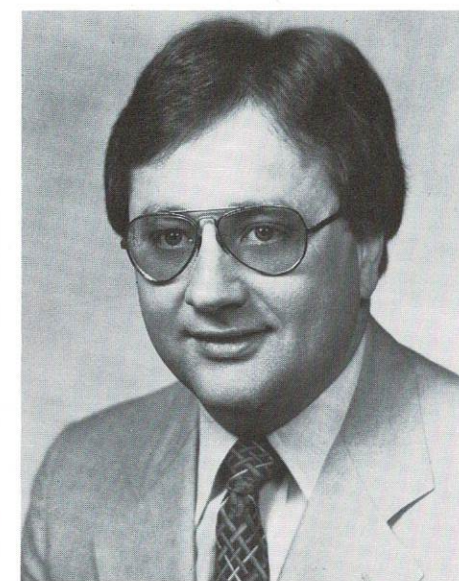
Throughout its 15 years, the WWSMRA has been blessed with a "chief of staff" whose abilities were equal to the immediate challenge. But the strength of the organization has always been its member companies, which have worked, fought, invented, patched and generally just done what was necessary to keep the industry alive when prospects were dimmest.

Coal producing companies have been very visible in this effort, but much of

what the Association has accomplished would not have been possible without the active support and participation of the Associate membership, those companies whose livelihood is directly linked to coal production. The Associate membership now comprises nearly two-thirds of the total WWSMRA membership.

Although the size and makeup of the permanent Association staff has varied through the years, there have been no personnel changes for nearly three years. President Ben Greene is now beginning his fifth year of service. Vice President Bill Raney, who came to us from DNR with a business as well as regulatory background, joined the staff in December, 1977.

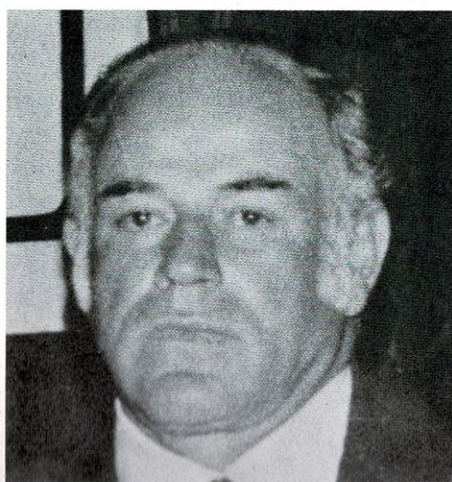
The two "oldtimers" of the staff are Assistant to the President Patty Bruce, and Business Manager Mary Ann Steele. Patty has seen everyone come and go, because she has been with the Association from year one. Mary Ann also has seniority over most of the membership, as she celebrated her 10th anniversary with WWSMRA last May. Publications Editor Dan Miller joined the staff in February 1977, and Secretary Brenda Garnett came in October 1978.



Dan Miller, Editor of Publications



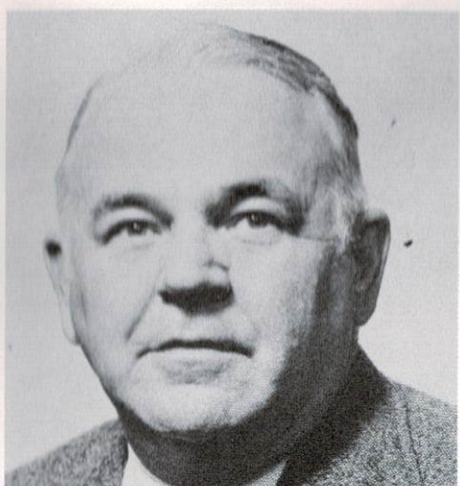
Leo Vecellio, Sr., 1966-67



F. B. Nutter, Sr., 1967-68



Arch F. Sandy, Jr., 1968-69



John C. Anderson, 1969-70



G. B. Frederick, 1970-72



James L. Wilkinson, 1972-73



Lawson W. Hamilton, Jr., 1973-74



James C. Justice, Sr., 1974-75



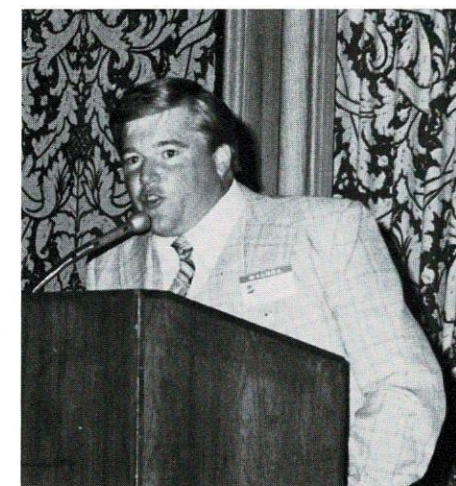
H. L. Kennedy, 1975-76



Frank D. Jennings, 1976-77



James H. Harless, 1977-78



John J. Faltis, 1978-79



Charles T. Jones, 1979-80

Leadership

It has already been mentioned that the strength of the WWSMRA is in its individual members. Each of the men pictured here, in addition to providing leadership for their own companies, have devoted a year or more of extra time and effort to serve as Association Chairman of the Board of Directors. It is not an easy task. But through the very nature of the surface mining industry, there has never been a lack of dedicated manpower to meet that challenge. The entire membership of the WWSMRA and all those who have benefitted from its works, owes these men an enormous debt of gratitude.



Lawrence A. Streets, 1980-81

THE HOUSE OF SERVICE OFFERS MORE THAN JUST A FULL LINE OF EQUIPMENT

OVER FORTY YEARS OF SERVICE TO WEST VIRGINIA

West Virginia Tractor & Equipment Co. has been engaged in the sales and service of construction, mining, industrial, and municipal equipment since 1936. We are not a "Johnny come lately." Like you, we have experienced the good times and the bad times, and we plan to be serving you for at least another forty years.

Of course we sell machines . . . new machines and used machines. Or we can set up a rental or lease plan with an option to purchase later. Your needs call the shots.

But West Virginia Tractor, the house

of service, offers more than just a full line of quality equipment. There's good parts support, field service, and shop repair . . . because we know that the only good machine is a working machine.

So, before you make up your mind about equipment, think about the dealer who stands behind it. We are proud of our ability to provide extraordinary service, and we invite you to check us out. Call your West Virginia Tractor sales representative or office in Charleston, Clarksburg, or Beckley for your equipment needs.



WEST VIRGINIA TRACTOR & EQUIPMENT CO.

CONSTRUCTION, MINING & INDUSTRIAL EQUIPMENT
CHARLESTON 346-5301 CALL TOLL FREE 800-642-8245
CLARKSBURG 624-7511 / BECKLEY 255-2155



WHY ARE COAL OPERATORS TURNING TO THE McDONOUGH CAPERTON INSURANCE GROUP?

WHO ELSE

**. . . is uniquely capable of
handling all of these insurance needs?**

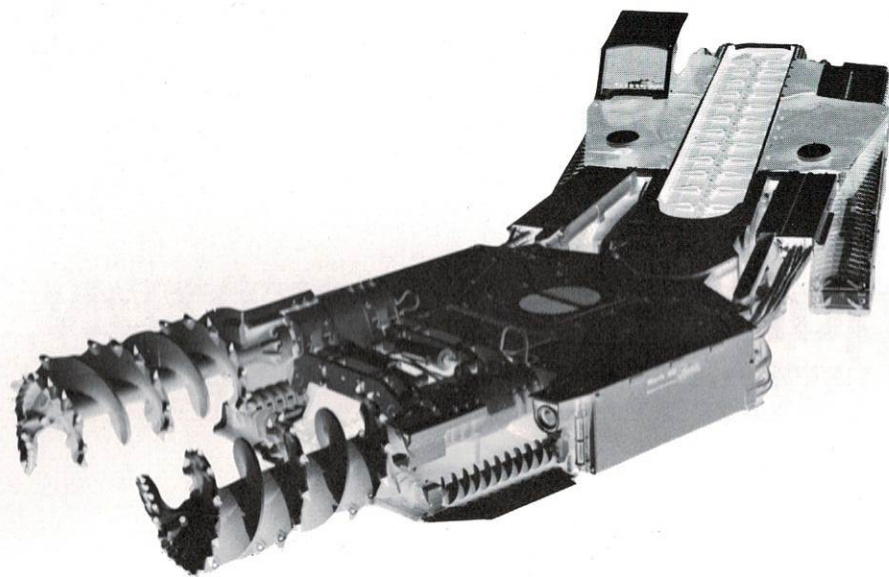
- General Liability Insurance for Underground and Surface Operations
- Auto Liability and Physical Damage Coverage
- Rolling Stock and Equipment Coverage
- Real and Personal Property Insurance
- Loss of Earnings Insurance
- Builders Risks Insurance
- Bonds
- Workmens Compensation Administration
- UMWA Benefits

McDONOUGH CAPERTON SHEPHERD GROUP

1014 Kanawha Boulevard E., Charleston, West Virginia 25326

Offices in: Charleston • Beckley • Parkersburg • Wheeling • Fairmont • Washington, D.C. • Bermuda BWI.

Your Profit Maker



Fairchild Mark 22 Continuous Miner

The Fairchild Mark 22 Continuous Mining System is a center place, articulated, full face, crawler mounted system that offers advantages of proven auger cutting capabilities with crawler mounted mobility, faster cutting cycles, and increased conveyor capacity.

Please contact a local Fairchild representative for the details on your Fairchild Incorporated Profit Maker.

- Le\$\$ Ash
- Le\$\$ Coal Fines
- Le\$\$ Maintenance
- Le\$\$ Downtime
- Le\$\$ Capital Expenditure
- More Profit
- More Coal
- More Available Operating Time
- Easier Ventilation



The WVSMRA traces its roots to similar groups organized on a regional basis in the early 1960's. Many of the gentlemen pictured here were instrumental in the formation of the Association in 1966.



The first Board of Directors of the West Virginia Surface Mining and Reclamation Association convened July 29, 1966, at the Daniel Boone Hotel in Charleston. At the head of the table is Leo Vecellio, Sr., the Association's first president.

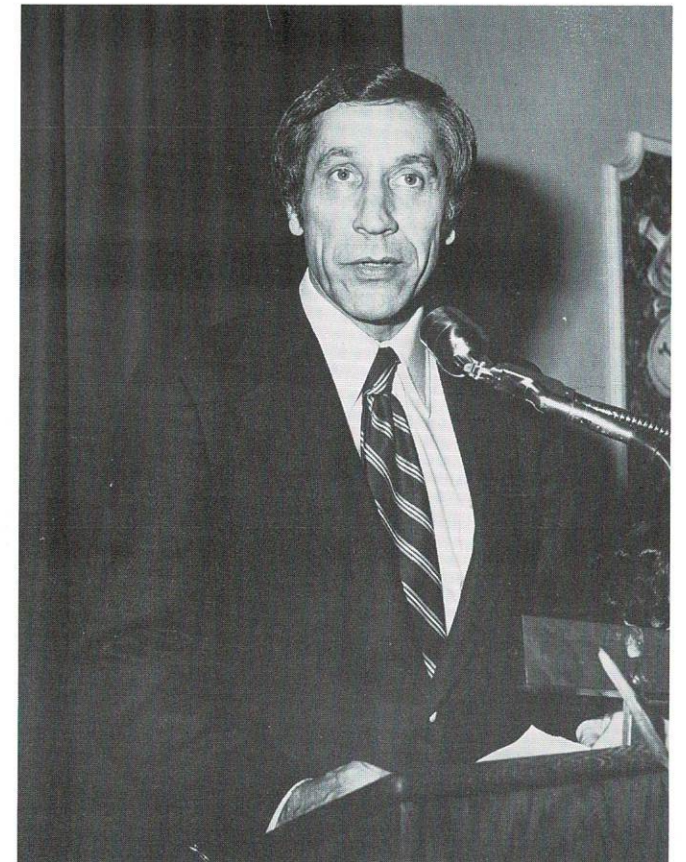


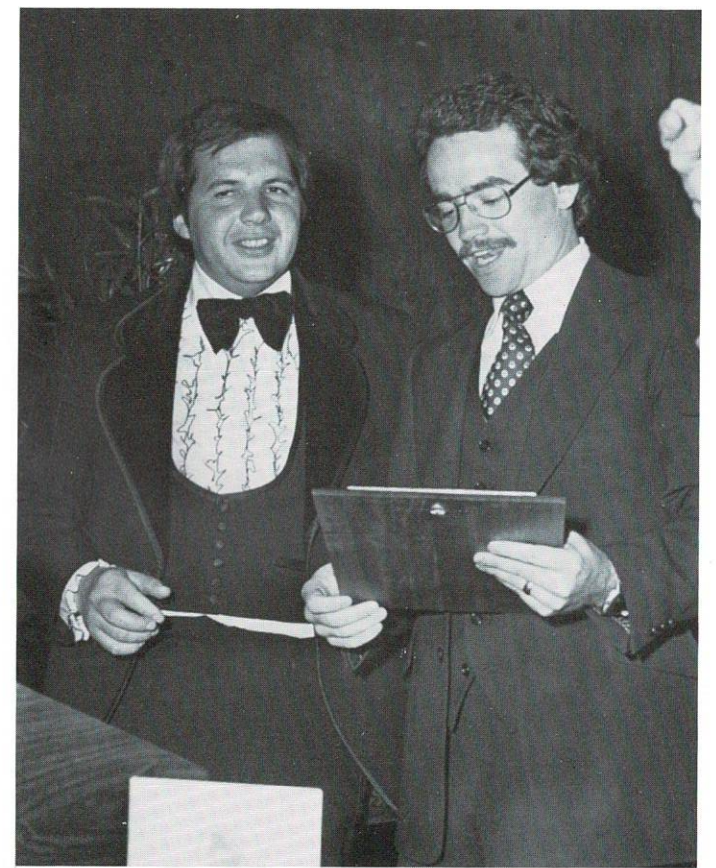
One of the Association's earliest and most critical functions was to promote sound reclamation practices. In cooperation with the State Department of Natural Resources, the WVSMRA founded the West Virginia Reclamation Awards, which remains a source of great pride to those operators who are so honored. Shown above are the winners from 1968. Below is the corresponding group from 1981.

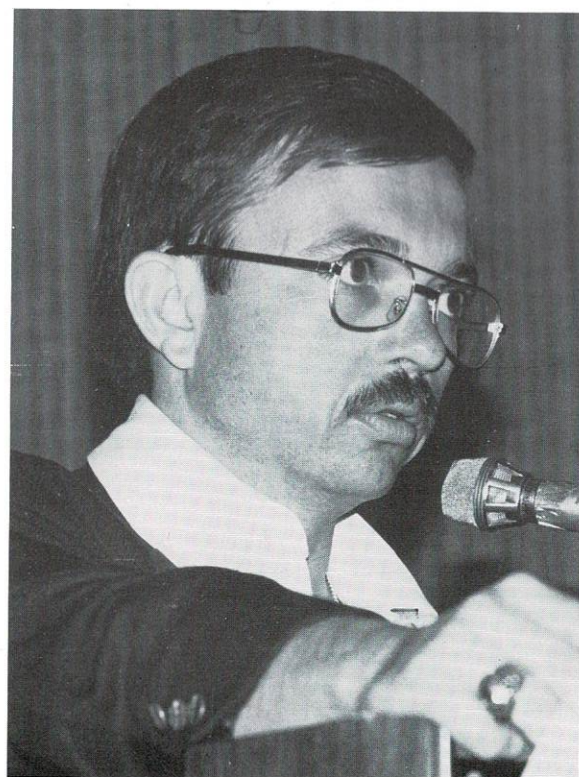
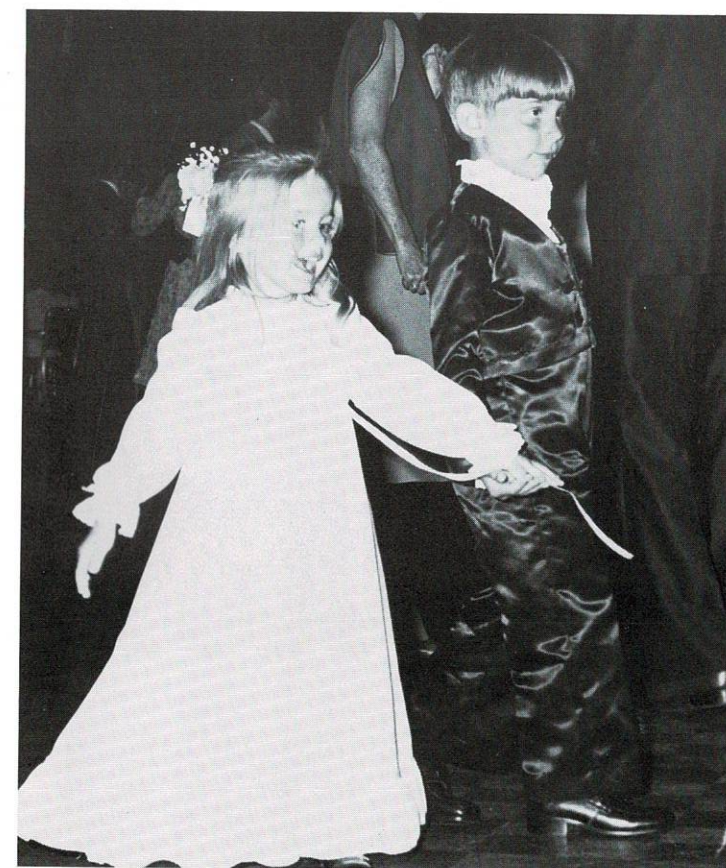
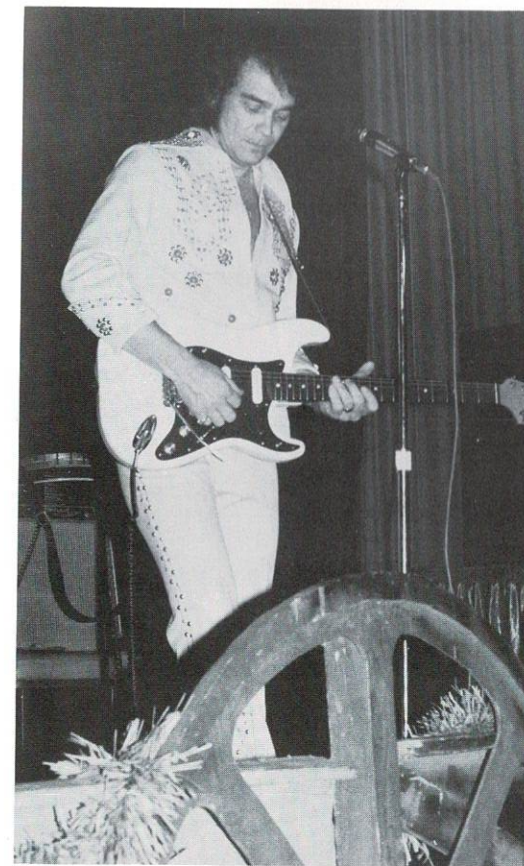


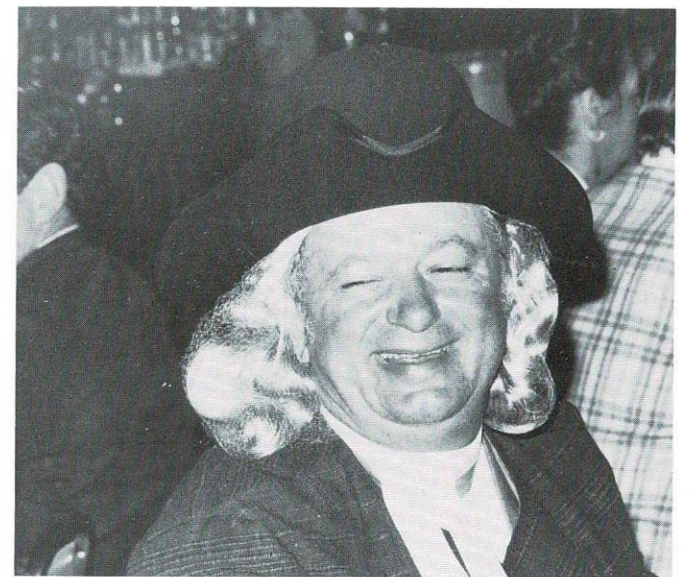
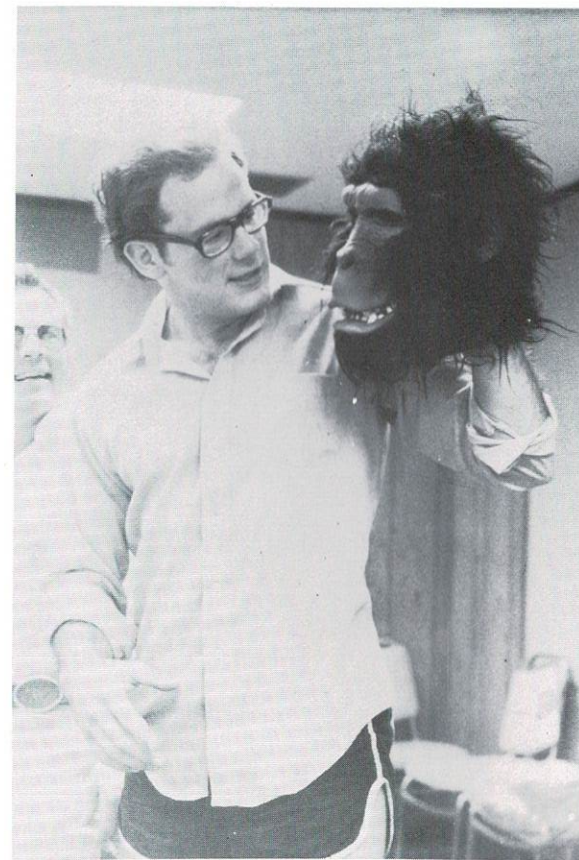
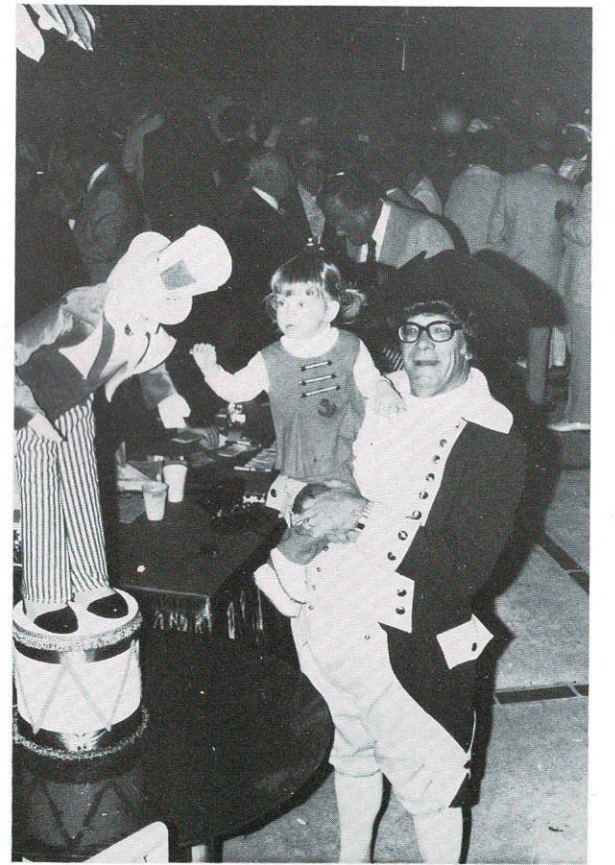
In 1976, the Association, in cooperation with West Virginia University, founded the Annual Coal Man of the Year Award, which honors individuals whose contributions of time and money and concern go beyond the coal business. In West Virginia coal, there has been no lack of people worthy of such an honor. The award program, now conducted by WVU, has been expanded to include three major honorees each year, one each from the deep mining, surface mining, and supply communities. Shown above is C. E. "Jim" Compton (r), receiving the 1st Annual Coal Man of the Year Award from Associate Division Chairman Bernard Folio, in 1976. A year later, at left, Compton offers his congratulations to the second honoree, James H. "Buck" Harless.

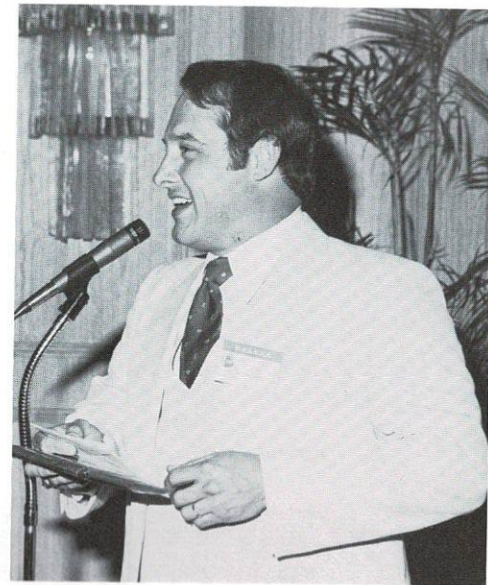












L.B. SMITH PRESENTS THE 325-H.



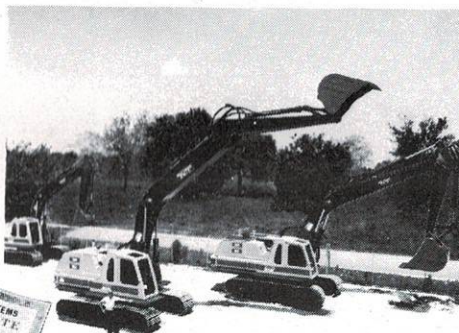
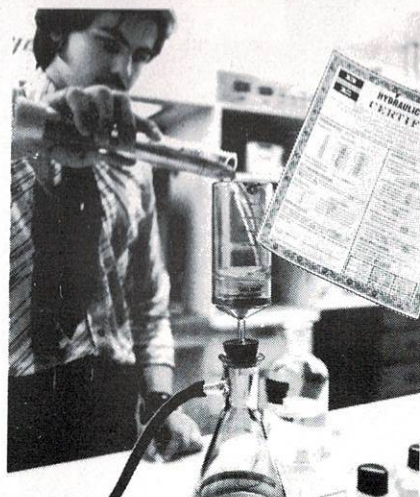
The 325-H, tackles tough jobs requiring a machine with capacities up to 2½ cu. yds. It has all the superior features which make the B-E 100 Series excavators the preferred back hoes: strong breakout force, high lift capabilities, and rugged construction in boom and handle which eliminates stress buildup... reduces chance of boom and handle failure. You get improved durability and availability in the toughest digging.

NOW 77,000 LBS. OF ROCK-TOUGH MACHINE.



The 325-H reaches far, digs deep, dumps high. Demand/control high pressure hydraulic system automatically adjusts speed and force on any digging cycle for peak productivity.

Like the other 100 Series excavators, the 325-H has a unique Tri-Armor fiberglass cab that insulates against heat, cold and noise. You get more production from your operator, more resale value when you trade in, because it keeps its good looks through years of service.



Every 325-H comes with a free hydraulic oil sampling program. Plus you get factory trained service personnel and worldwide parts availability. Check out the new 325-H, the smaller 300-H, or the bigger 350-H.

CONSTRUCTION MACHINERY
BUCYRUS-ERIE



L.B. SMITH

WEST VIRGINIA
Beckley, W. Va. 25801 — 113 Harper Park Drive (304) 255-4174
Nitro (Charleston), W. Va. 25143 — 500 River Road
(304) 755-8381

Cummins Service



Rely on Cummins Experts

As the owner of a Cummins diesel, you've got one of the most reliable engines you can buy. But if something does go wrong, we'll get you turned around fast with trained Cummins technicians and a complete inventory of Genuine Cummins Parts and ReCon® rebuilt assemblies. We're on call 24 hours

a day, and if you can't get to us, we'll get to you with a service truck and a diesel technician.

We also have the maintenance programs and diagnostic equipment to spot trouble before it strikes. And service training courses are available for your mechanics.

Cummins service is just a phone call away... we're in the Yellow Pages under "Engines — Diesel". Cummins Service. Why gamble on anything else?

Cummins Engines of West Virginia, Inc.

Charleston
Fairmont

304-744-6373
304-367-0196

THE SWING IS TO...

Worldwide Equipment Inc.



"Almost Heaven"

Mt. State Mack
of Northern West Virginia, Div.
P. O. Box 1080
Weston, WV 26452 ★
304-269-2101

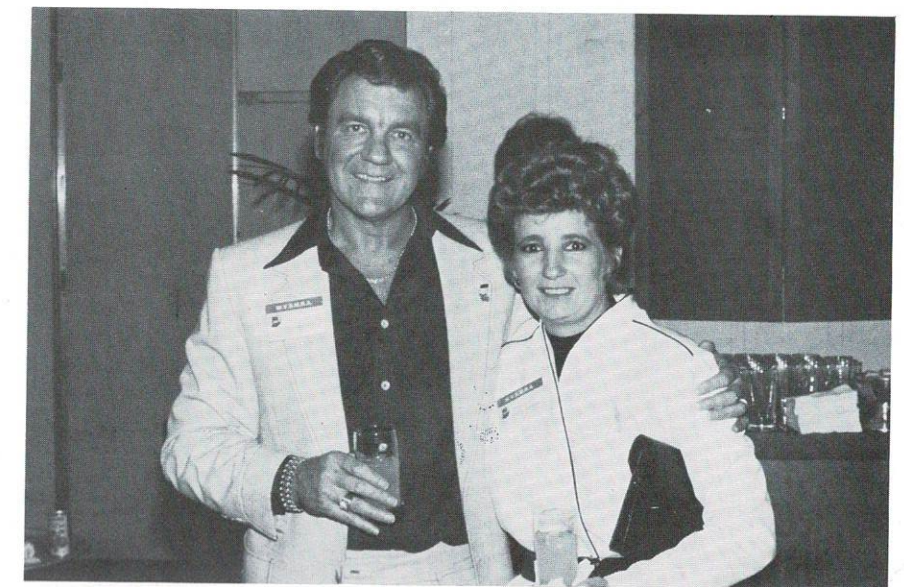
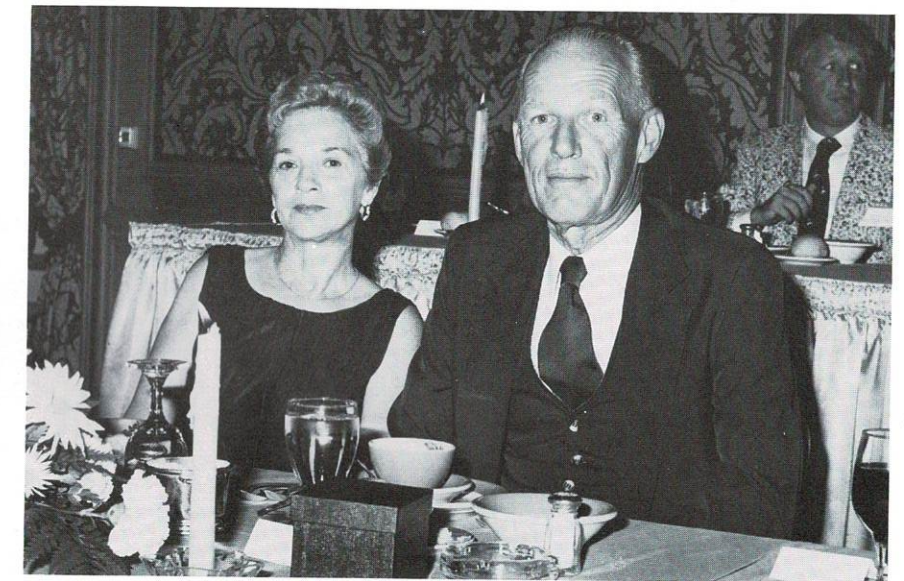
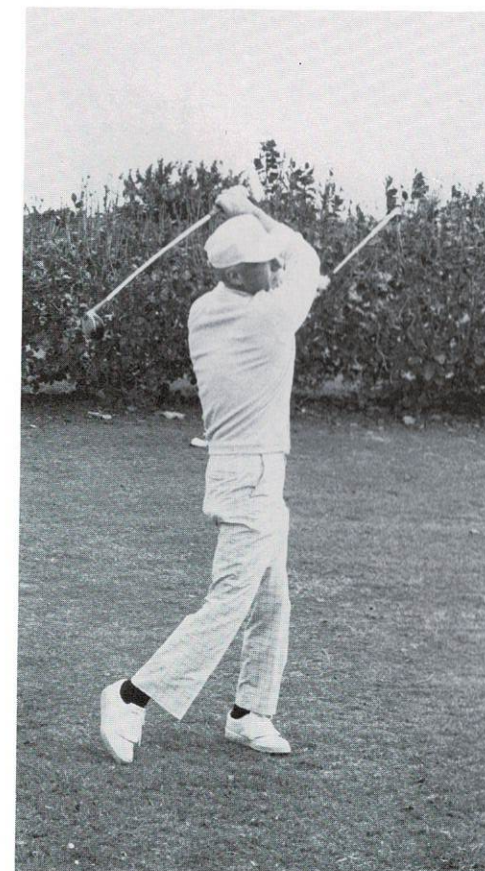
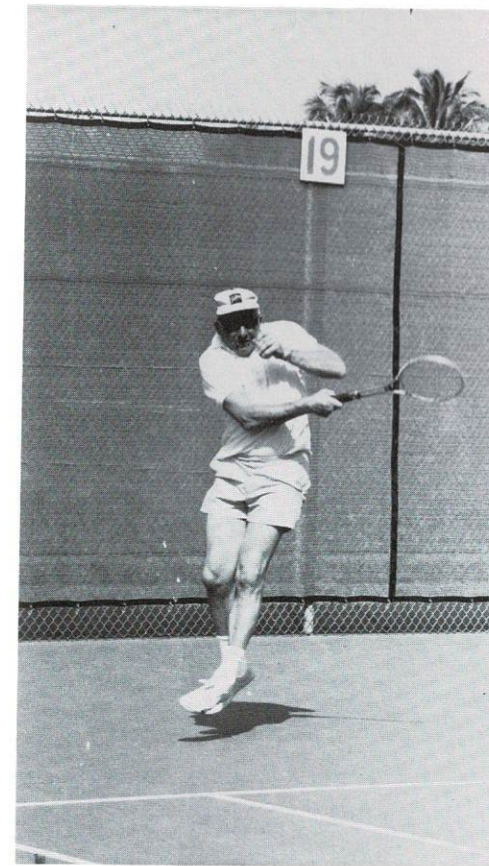
Eastern Kentucky Mack, Div.
Prestonsburg, Ky. 41653
★ 606-874-2172

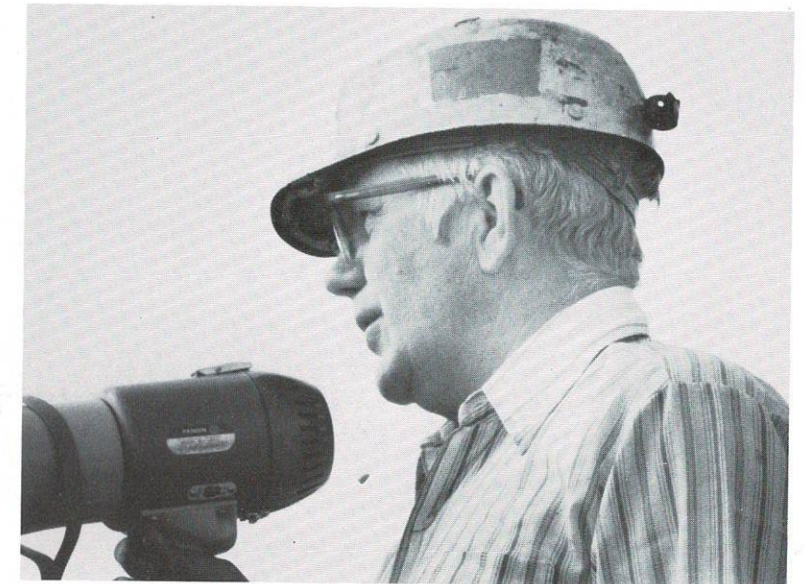
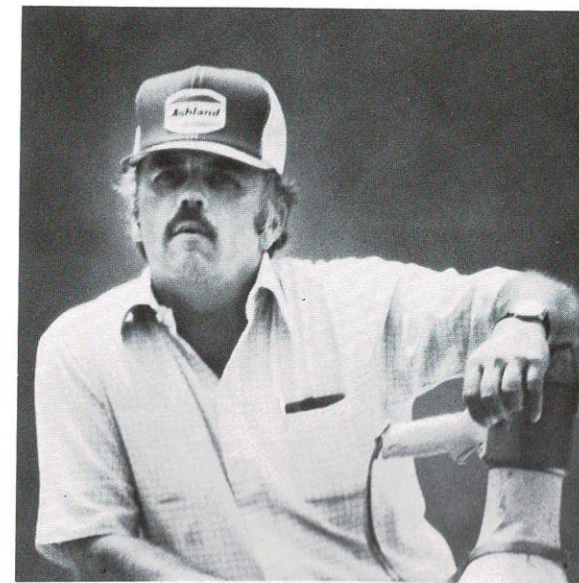
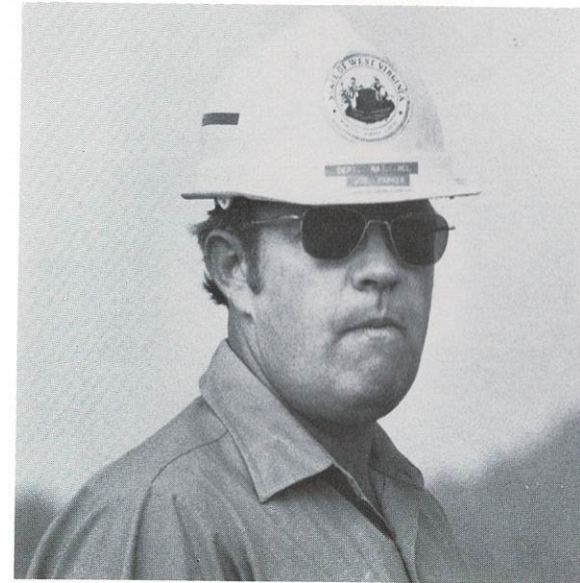
Mountain State Mack, Div.
★ Belle, W. Va. 25015
304-949-5190

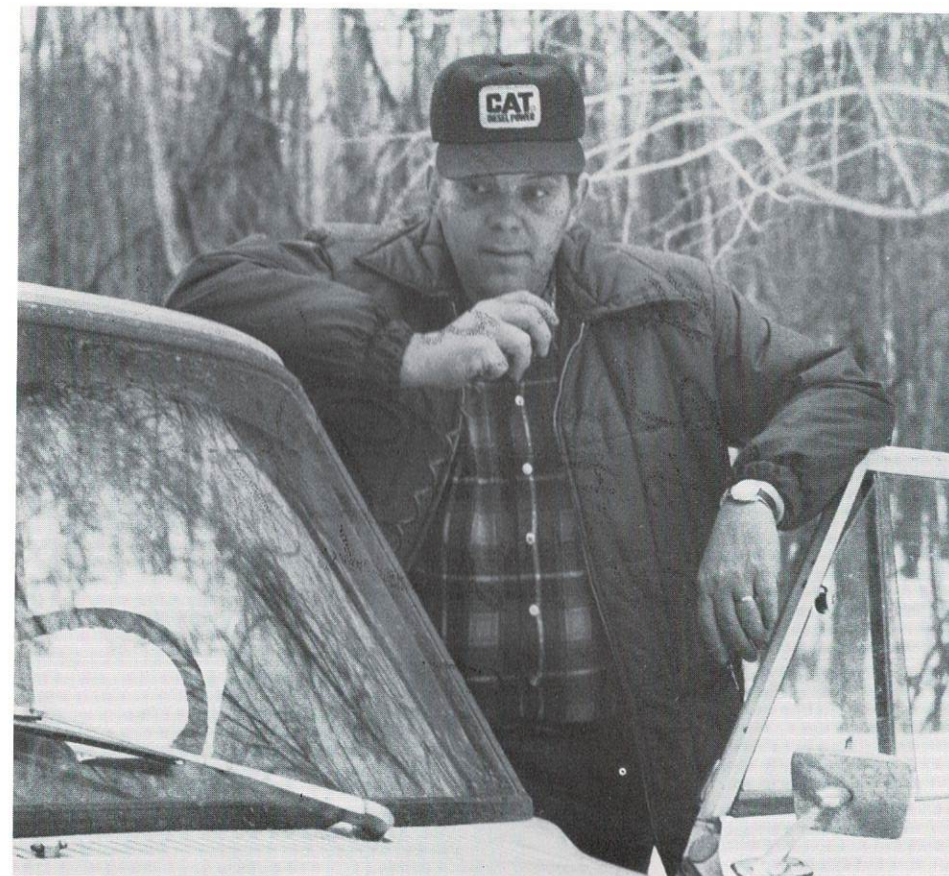
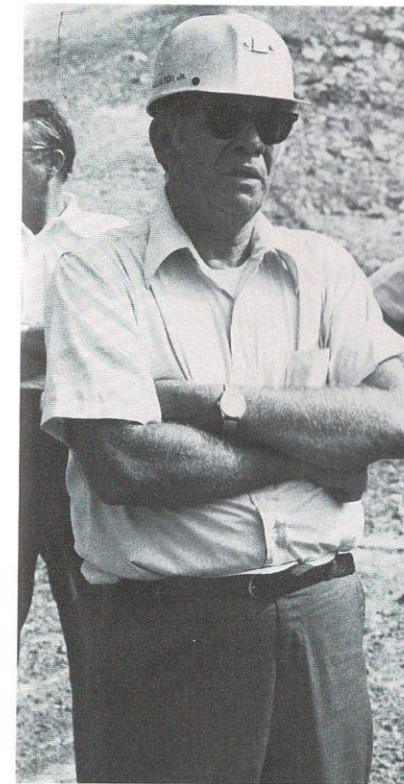
Mid-Mountain Mack, Inc., Div.
Princeton, W. Va.
304-425-7511 ★

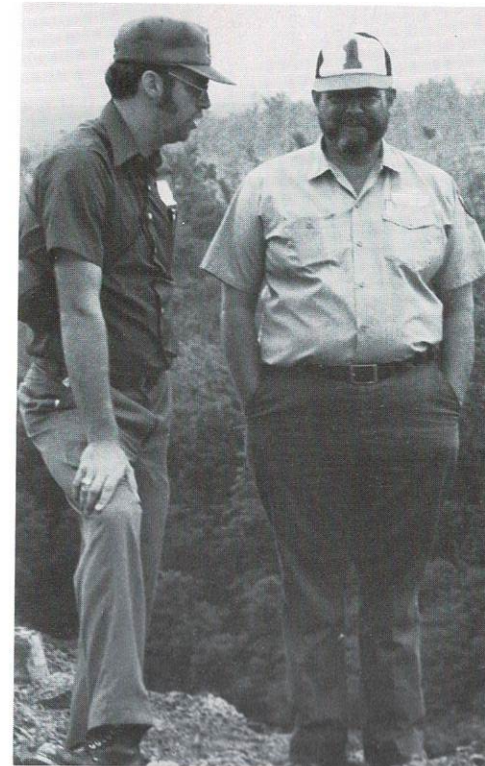
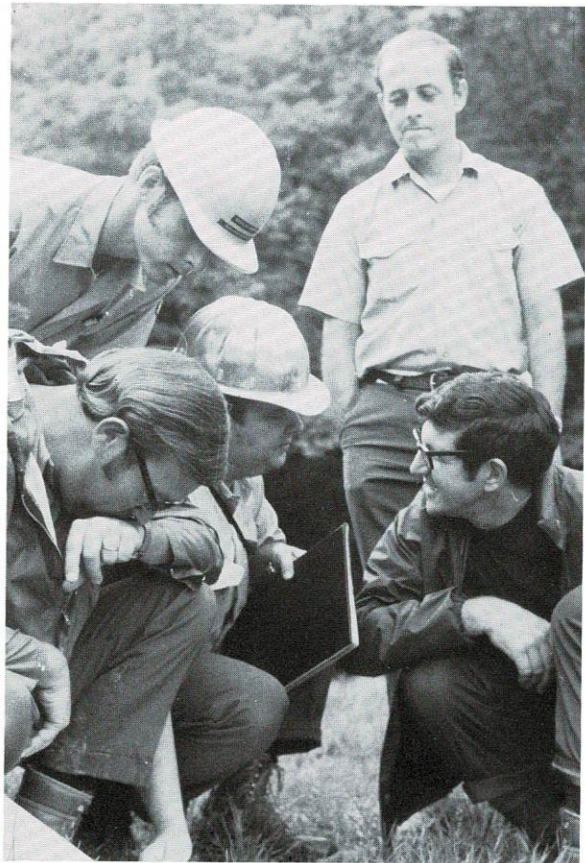
Mid-South Mack, Div.
Middlesboro, Ky. 40965
606-248-5100 ★

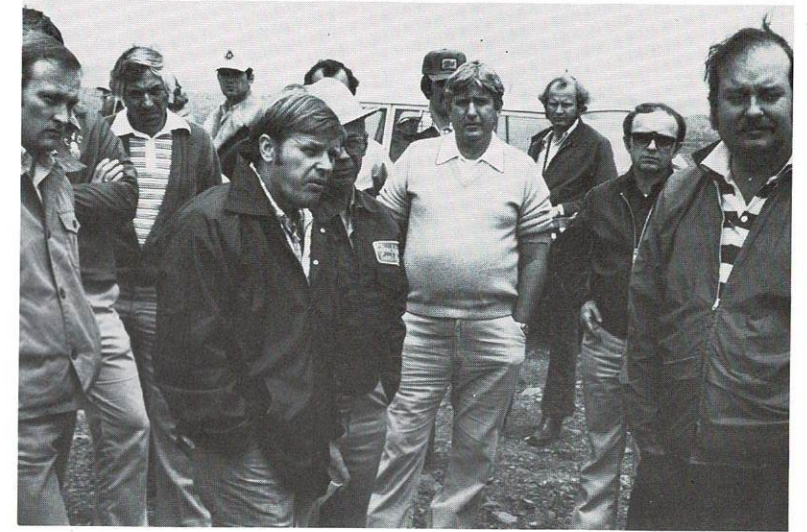
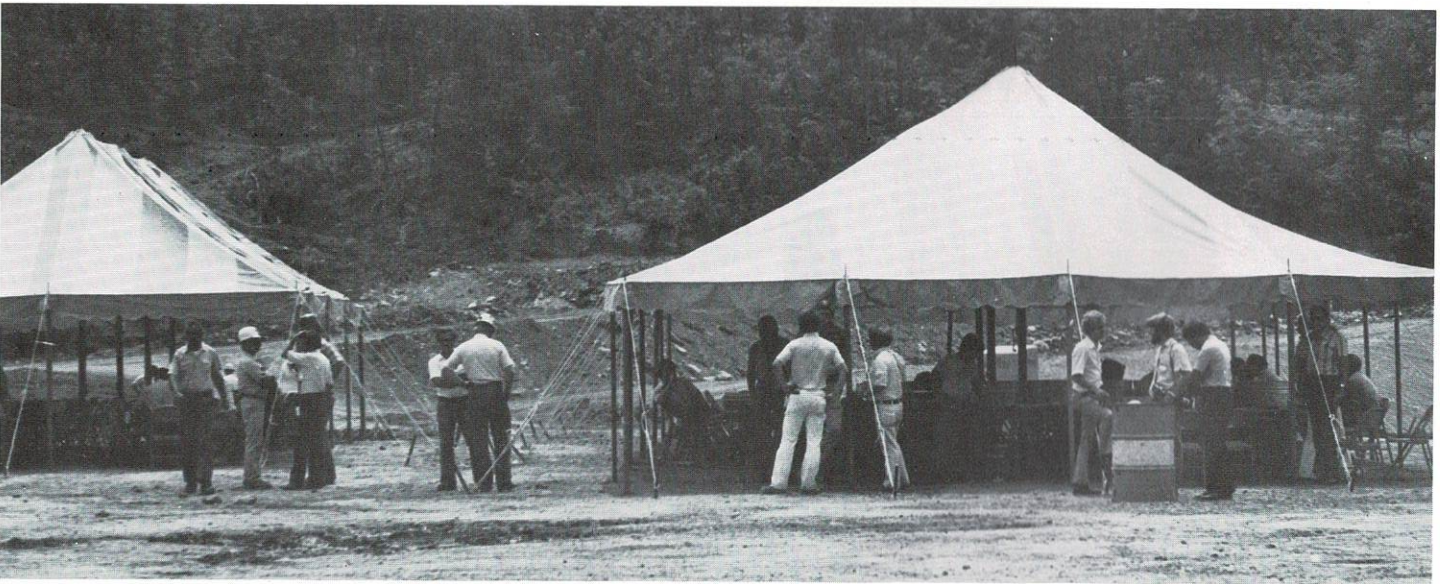
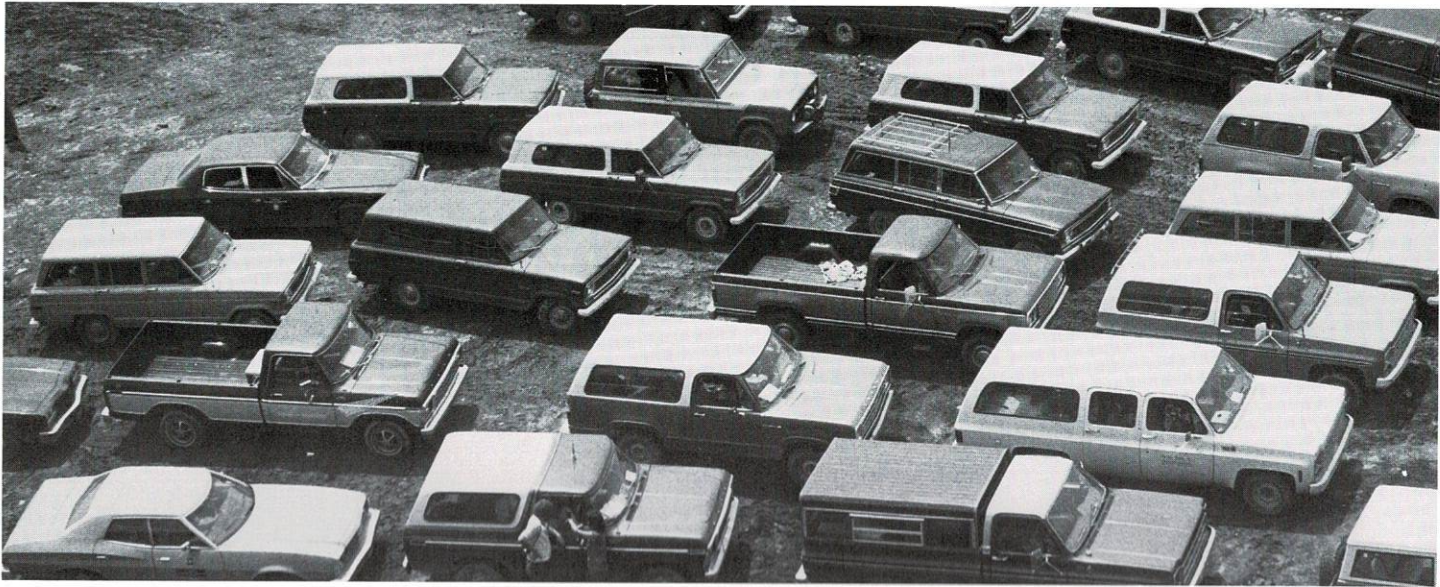
- * Over 125,000 square feet of service facilities in West Virginia and Kentucky
- * Dependable service from a fleet of field service trucks
- * Over \$4 million in parts inventory
- * World's largest dealer of Mack Trucks with over 150 new and used on and off highway vehicles in stock at all times.











NOBODY DOES IT BETTER!

When times are tough, price becomes very important, and regardless where you look, you can always find cheaper parts — you can always find cheaper prices — and you can always find cheap labor.

But in the long run you always get what you pay for.

Our reputation is built on quality — and we still believe customers want quality in a product or in the service they receive. With 45 years of quality work behind us already we **know** we can do a better job for you — with Detroit diesel engines, Allison transmissions, **reliabilt** parts, genuine DDA parts, and most important — with our team of professionals.

You don't have to settle for second best. We have seven locations and over 60 authorized dealers throughout West Virginia, Ohio, Kentucky and Virginia to work with you.

Don't You Deserve The Best?

Ray C. Call, Inc.

South Charleston, W. Va. 25303
Box 8245 304/744-1511

Steubenville, Ohio 43952
Box 2069 614/264-7121

Strasburg, Ohio 44680
Box 167 216/878-5516

Grundy, Va. 24614
Box 828 703/935-2559

Marietta, Ohio 45750
Rt. 7 Newport, Pk. 614/373-9411

(Hazard) Jackson, Ky. 41339
Box 1613 606/666-4981

Cambridge, Ohio 43725
Box 804 614/439-6631

TOLL FREE AFTER HOURS
IN W. VA. 1-800-642-3627
OTHERS 1-800-624-8225

NOBODY DOES IT BETTER!

Detroit Diesel Allison
Division of General Motors Corporation

EUC[®] R-85 a great hauler for simple reasons

- **GREATER PAYLOAD CAPACITY**
- **BETTER, FASTER LOADING**
- **LONGER TIRE LIFE**
- **EASILY SERVICED**
- **YOU CAN MATCH IT TO THE JOB**



MOUNTAINEER **Euclid** **INC.**

6406 MacCorkle Avenue, S.W.
P. O. Box 8515
So. Charleston, West Virginia 25303
Phone: 304/768-0081

P. O. Drawer 0
Exit 105 off I-79
Jane Lew, West Virginia 26378
Phone: 304/624-7624

112 Harper Park Drive
P. O. Box 1773
Beckley, West Virginia 25801
Phone: 304/255-4133



MAN LIFE
MADE
FIBERS CENTER



Mirafi® fabric puts the coal mining business on a more stable footing.

You have so many problems to live with...
Stabilizing the soil shouldn't be one of them.

Where your haul roads, portal areas, storage yards, stockpiles are on mucky, swampy, unstable soil, a construction fabric called Mirafi 500X makes your life a lot easier.

For Mirafi 500X separates subsoil from aggregate, and keeps them apart. It helps create a firm, lasting foundation.

It's fast (simply unroll it after you clear away things like stumps and boulders). It's economical (it saves aggregate with every roll). And it's rugged (it holds up under the severe traffic).

But that's not all.

We have other Mirafi fabrics to provide low-cost solutions to other construction, maintenance and regulatory compliance problems you face.

Drainage and filtration for dam toe and blanket drains, valley fills, zoned dams and plant facilities. The expense and problems related to graded-aggregate filters make Mirafi 140S a cost-effective alternative.

And for sedimentation and erosion control, silt fences using Mirafi 100X are a convenient, low-cost approach. We also offer a preassembled silt fence containing Mirafi 100X fabric, plastic reinforcing mesh, tension strand and oak posts—a package called Envirofence™.

When it comes to the ground around you, let Mirafi prepare the way. For more information and sources of supply, call Ralph Lemon Company at 304-727-7804 or call us toll-free at 800-223-9811.

Mirafi® is a trademark licensed to Celanese Corp.

Mirafi®. It's more than just a fabric.

Put extra speed and power into blasthole drilling.

The Ingersoll-Rand Drillmaster line. For rotary or downhole drilling, in medium to very hard formations, you'll find a rugged, powerful, fast and versatile rig that will do a masterful job every time. They're available with air compressor options up to 1050 cfm at 350 psig.

T4 Drillmaster: truck-mounted top-drive rig for rotary or downhole drilling; holes up to 8" in hard rock.

T5 Drillmaster: truck-mounted top-drive rig for rotary or downhole drilling; holes to 9 7/8" in hard rock.

DM45 Drillmaster: crawler-mounted top-drive rig with 45,000-lb. pulldown and up to 69,000 inch-lb. torque, for rotary or downhole drilling of holes up to 8" in hard rock.

DM50 Drillmaster: crawler-mounted top-drive rig with 50,000-lb. pulldown and up to 85,000 inch-lb. torque, for rotary drilling up to 9 7/8" diameter.

For more information on how you can become master of one of these drill rigs, call your Ingersoll-Rand distributor today. He's our strong right hand.

Your distributor:
Our strong right hand

MOUNTAINEER EUCLID, INC.

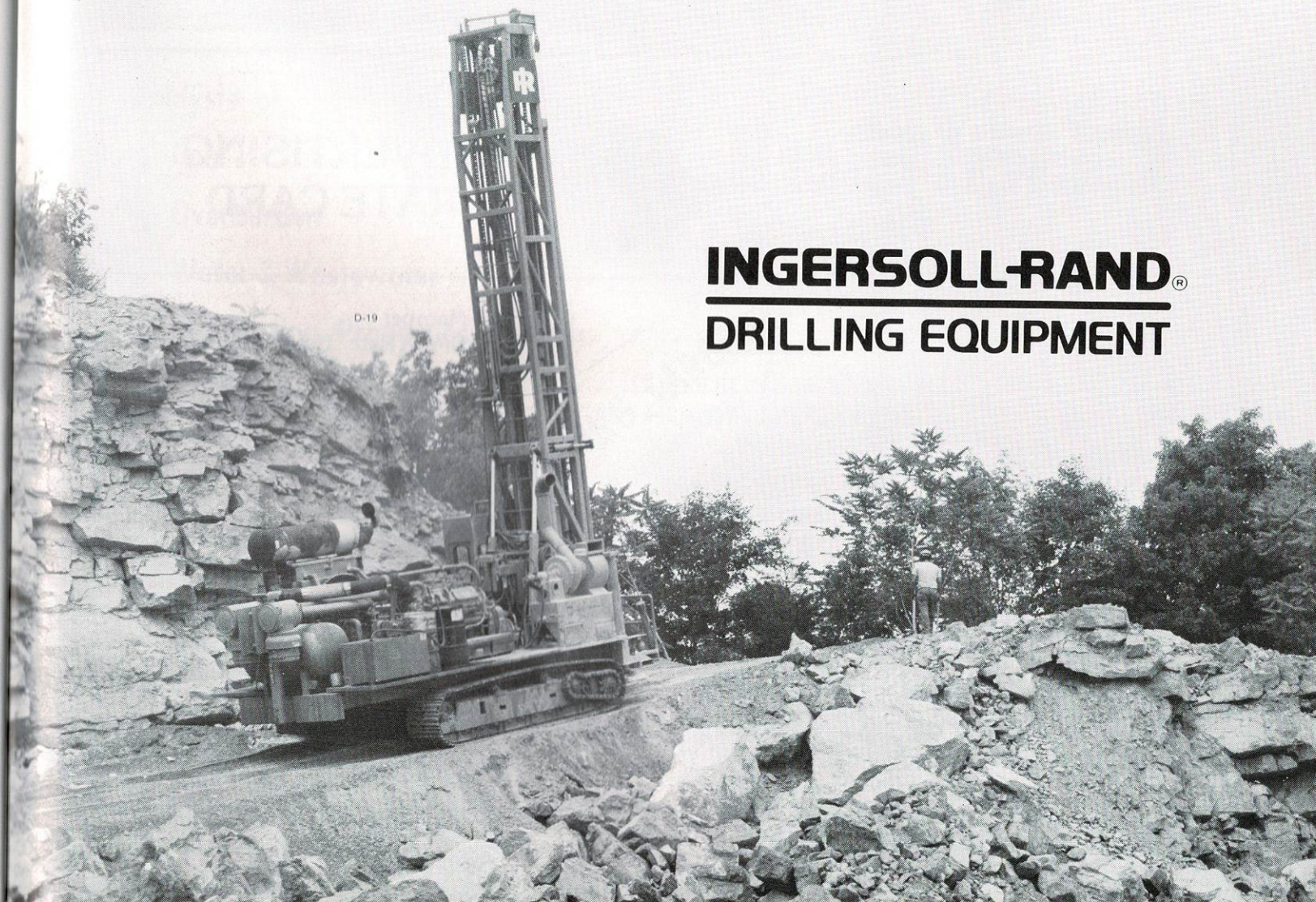
112 Harper Park Drive
P.O. Box 1773

Beckley, W. Va. 25801
Phone (304) 255-1525

Jane Lew, W. Va. 26378
Phone (304) 884-7457

6406 MacCorkle Ave. S.W.
So. Charleston, W. Va. 25303
Phone (304) 768-0081

INGERSOLL-RAND®
DRILLING EQUIPMENT



Serving the Coal Industry for over 50 years



Chamberlaine
& Flowers^{INC.}

INSURANCE

128 South Second Street
Clarksburg, West Virginia 26301
304/623-3721

745 Chestnut Ridge Road
Morgantown, West Virginia 26505
304/599-8735

18 West Main Street
Buckhannon, West Virginia 26201
304/472-2402



“TOTAL SERVICE is what we’re all about”



ADVERTISING
RATE CARD

| Ad | Dimensions | Member | |
|--------------|------------------------|-------------|----------------|
| | | WVSMRA Rate | Nonmember Rate |
| Full Page | 4 columns by 13 inches | \$480 | \$600 |
| Display Page | 3 columns by 10 inches | \$320 | \$400 |
| Half Page | 26 column inches | \$280 | \$350 |
| Quarter Page | 13 column inches | \$160 | \$200 |
| Eighth Page | 6½ column inches | \$100 | \$125 |

Column Width — 15 Picas

Deadline (Closing Date) — 1st of each month preceeding publication
i.e. January 1 for February edition.

Member Discounts Only — No Agency Discounts

Advertising materials should be received in the form of black and white prints or negatives.

We Can
Handle
It!

J.D.Hinkle and Sons, Inc.
supplies fuel and lubri-
cants to the mining in-
dustry. Quality Union 76 products
with a reputation for efficient
service and competitive prices
mean that we can supply your
needs. Consider us also for bulk
fuel storage tanks, 2,000 to 12,000
gallon capacity and skids for
mobile or permanent installation.
J.D.Hinkle and Sons, we CAN
Handle it!

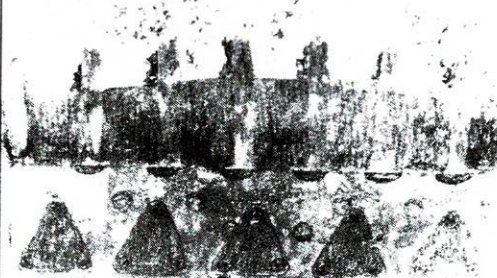
j.d.HINKLE
& sons, inc.



P.O. Box 70 • Buckhannon, WV 26201
(304) 472-3367

Firestone[®]

Heavy Duty
Off the Road Tires



Tire City is
your complete
sales and ser-
vice center
for Firestone
heavy duty, off
the road tires
that give you
heavy hauls at
a low cost per
hour. Give us a
call today.
Statewide, you
just can't beat
Tire City for
expert service



Spring Street,
Buckhannon
Call 472-1312

Analysis of

- Coal
- Overburden
- Water & Wastewater
- Engineering Properties of Soils

TECHNICAL TESTING LABORATORIES, INC.
1263 GREENBRIER ST.
Charleston, WV 25311
304-346-0725

- Coal Preparation Plant Permit
- Surface & Deep Mining Permit
- Discharge Mining Report







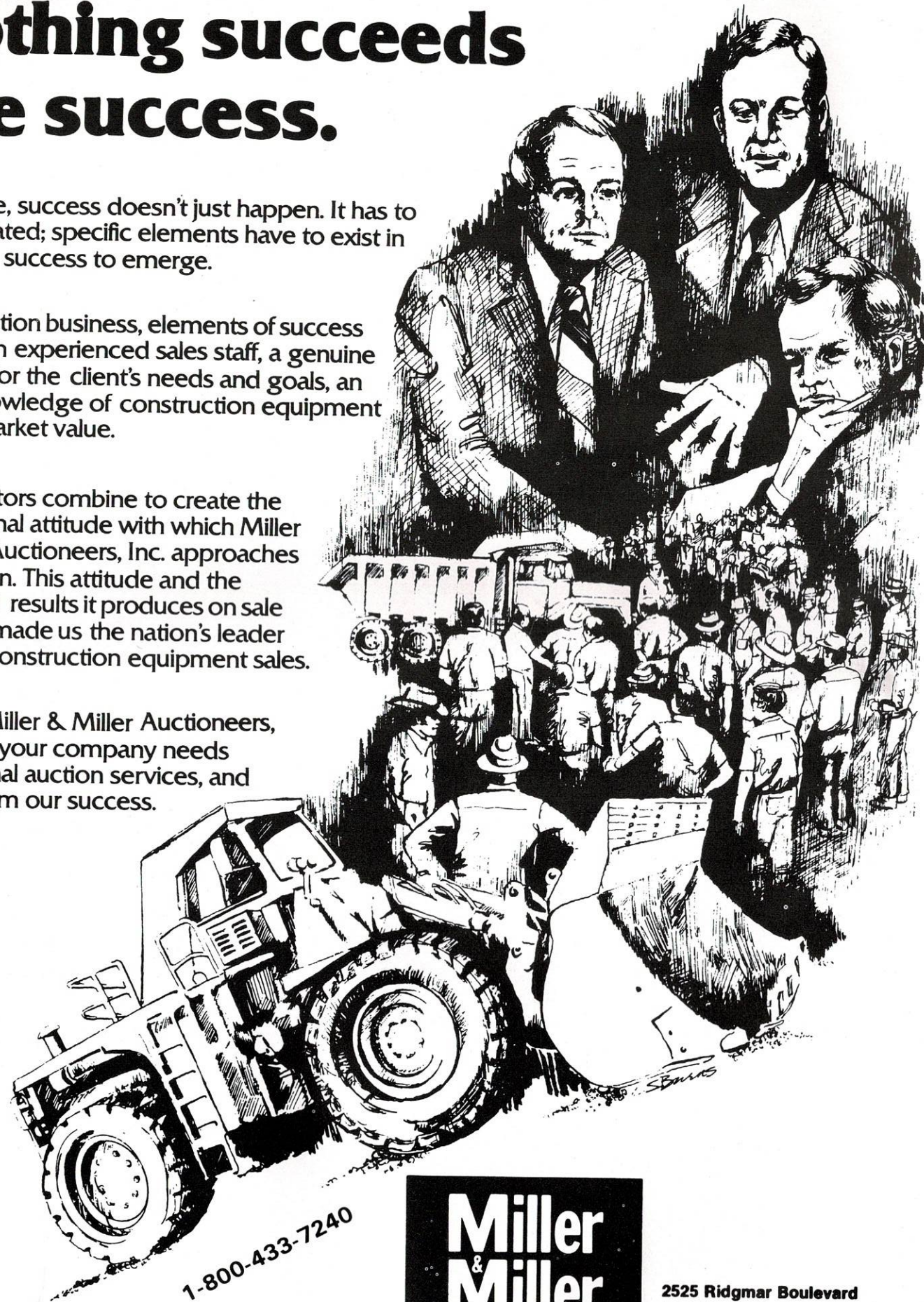
Nothing succeeds like success.

Of course, success doesn't just happen. It has to be cultivated; specific elements have to exist in order for success to emerge.

In the auction business, elements of success include an experienced sales staff, a genuine concern for the client's needs and goals, an exact knowledge of construction equipment and its market value.

These factors combine to create the professional attitude with which Miller & Miller Auctioneers, Inc. approaches an auction. This attitude and the successful results it produces on sale day have made us the nation's leader in heavy construction equipment sales.

Contact Miller & Miller Auctioneers, Inc. when your company needs professional auction services, and benefit from our success.



1-800-433-7240

**Miller
& Miller**
AUCTIONEERS, INC.

2525 Ridgmar Boulevard
Fort Worth, Texas 76116

817-732-4888
TELEX: 75-8440



IT'S A CRYING SHAME!

It really is! Here we are sitting on 437,000,000,000,000 (that's trillions!) tons of coal, much of it right here in the Appalachians. That coal can heat our homes, power our industries and run our cars, trucks and planes. The technology, with respect for the environment, exists. It's a crying shame we're not using it.

There are other benefits, too. For example we might not have to rely on OPEC and we just might become energy independent. Another benefit: the jobs that would be created—from the mines to the processors to the sellers. And that's good for our economy.

We're Beckwith Machinery Company, your Caterpillar Dealer, and we think it's a shame to ignore the natural resources, the technology and... certainly the people.

What on earth are we waiting for?

BECKWITH 
Machinery Company

PITTSBURGH, PA • ALTOONA, PA • BRADFORD, PA • CLARION, PA
CLEARFIELD, PA • ERIE, PA • SOMERSET, PA • CLARKSBURG, WV
MATERIAL HANDLING DIVISION, N. VERSAILLES, PA

YOUR CATERPILLAR DEALER

Caterpillar, Cat and  are Trademarks of Caterpillar Tractor Co.

If you want it green
Call Willco

Reclamation and Hydroseeding • Landscape Seeding
 Erosion Control



Ed Williams, President

WILLCO RECLAMATION, INC.

619 Open Rocks Rd. – Summersville – 304 / 872-2287

**"Let Us Evaluate and Bid Your Next Job.
 You'll Be Glad You Did!"**

Approved Private Contractor Since 1972.

"Land Stabilization Specialists"
 Over 30 Years Combined Experienced

David J. Ozmina
 President

Professional Fisheries Biologist
 Certified Fisheries Scientist
 Certified Wildlife Biologist

D & D
 Reclamation, Inc.

Charles E. Massie
 Vice President
 763-2134

Water Sampling
 Service

Tree Planting
 Hydroseeding

Erosion and
 Sediment Control

P. O. Box 1004

Tel. 304-253-8309

Beckley, W. Va. 25801

AMERICA'S #1 TANDEM AXLE COAL HAULER

Off-highway tandem axle trucks have been the CLINE design concept for over 28 years. Years of experience and technology have made CLINE AMERICA's #1 coal haulers.

CLINE coal haulers have proven their superior performance in the severe adverse coal fields throughout the Appalachian mountains. Conditions where muddy, slippery and steep haul roads prevail, making conventional rear dump haulers stop in their tracks.

CLINE's tandem axle design puts the load closer to the ground increasing truck stability and insuring driver confidence. And by spreading the load over 10 tires instead of 6, distributing the load over a larger ground surface, this in turn helps to preserve haul road life.

Each CLINE coal hauler is built with known components like Cummins, Detroit Diesel and Caterpillar engines, Allison transmissions, and Rockwell and Clark axles.

We design our coal haulers to be tough, dependable and easy to service to keep your job profitable.

CLINE coal haulers are available in 40, 50 and 65 ton rear dumps, tractors for bottom dumps up to 120 tons and refuse haulers in 35, 50 and 65 ton capacity. We build the trucks to fit your needs.

When you need a coal hauler, buy the best, buy AMERICA'S #1 COAL HAULER.



Cline



250 R REFUSE HAULER

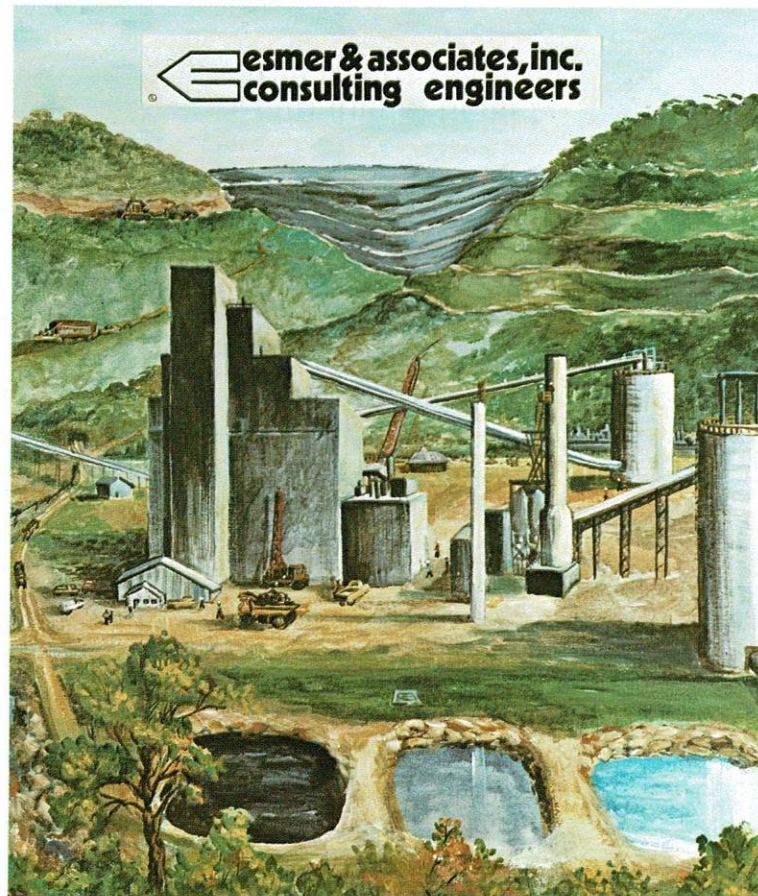
CLINE TRUCK SALES, INC.

3000 EDENS FORK RD. (I-77 NORTH)
 CHARLESTON, WV 25312
 TELEPHONE (304) 345-3090

Circle 186 on Product Information Card

Cline is a trademark of T & J Industries

Turnkey Engineering Services For The Coal Industry



Exploration Services

- *Shallow Holes For Overburden Analysis*
- *Deep Holes For Coal Exploration*
- *Geological Studies*
- *Reserve Analysis*
- *Property Evaluation*
- *Pressure Grouting*
- *Pressure Testing*

Testing Services

- *Overburden Analysis*
- *Water & Wastewater*
- *Soil*
- *Concrete*
- *Asphalt*
- *Rock*
- *Aggregates*

Engineering Services

- *Design Of Surface And Deep Mines*
- *Design Of Surface Facilities For Preparation Plants*
- *Design Of Coal Refuse Facilities*
- *Permit Acquisition DNR, APCC, EPA, MSHA, OSM*
- *Environmental Engineering For Mine Discharge*
- *Reclamation Of Mined Lands*
- *Field Engineering*
- *Consultation*

Esmer & associates, inc.
consulting engineers

P. O. Box 397, Boomer, West Virginia 25031, Tel. (304) 779-9679 — 779-9767



WABCO Haulpak 120 ton mechanical drive rock hauler.

WABCO Now At Rish

A TRADITION OF EXCELLENCE

Rish Equipment Company is proud to announce it is now the distributor of WABCO's quality line of off-highway trucks.

WABCO off-highway haulers range in size from a payload capacity of 35 tons up to a capacity of 250 tons.

THREE TIME WORLD CHAMPION

Introduced in 1957, WABCO Haulpak Trucks have three times won WORLD MINING'S Annual Blue Ribbon Award for outstanding contributions to the minerals industry.

WABCO, a quality name in trucks and RISH, a quality name in construction equipment distribution, combine for meeting the off-highway hauling requirements of our customers.



PEOPLE, EQUIPMENT, SERVICE



EQUIPMENT COMPANY

- Bluefield, WV
- Parkersburg, WV
- Beckley, WV
- St. Albans, WV
- Clarksburg, WV
- Frostburg, MD