

Green Lands
West Virginia Mining
& Reclamation Association
1624 Kanawha Blvd. East
Charleston, WV 25311

Address Correction Requested

Bulk Rate
U.S. Postage
PAID
Permit No.-1
Ravenswood, WV

Quality Machines



Dedicated People



BEN B. FAULKNER
RT 1 BOX 673
PRINCETON WV 24740

Intelligent Decisions



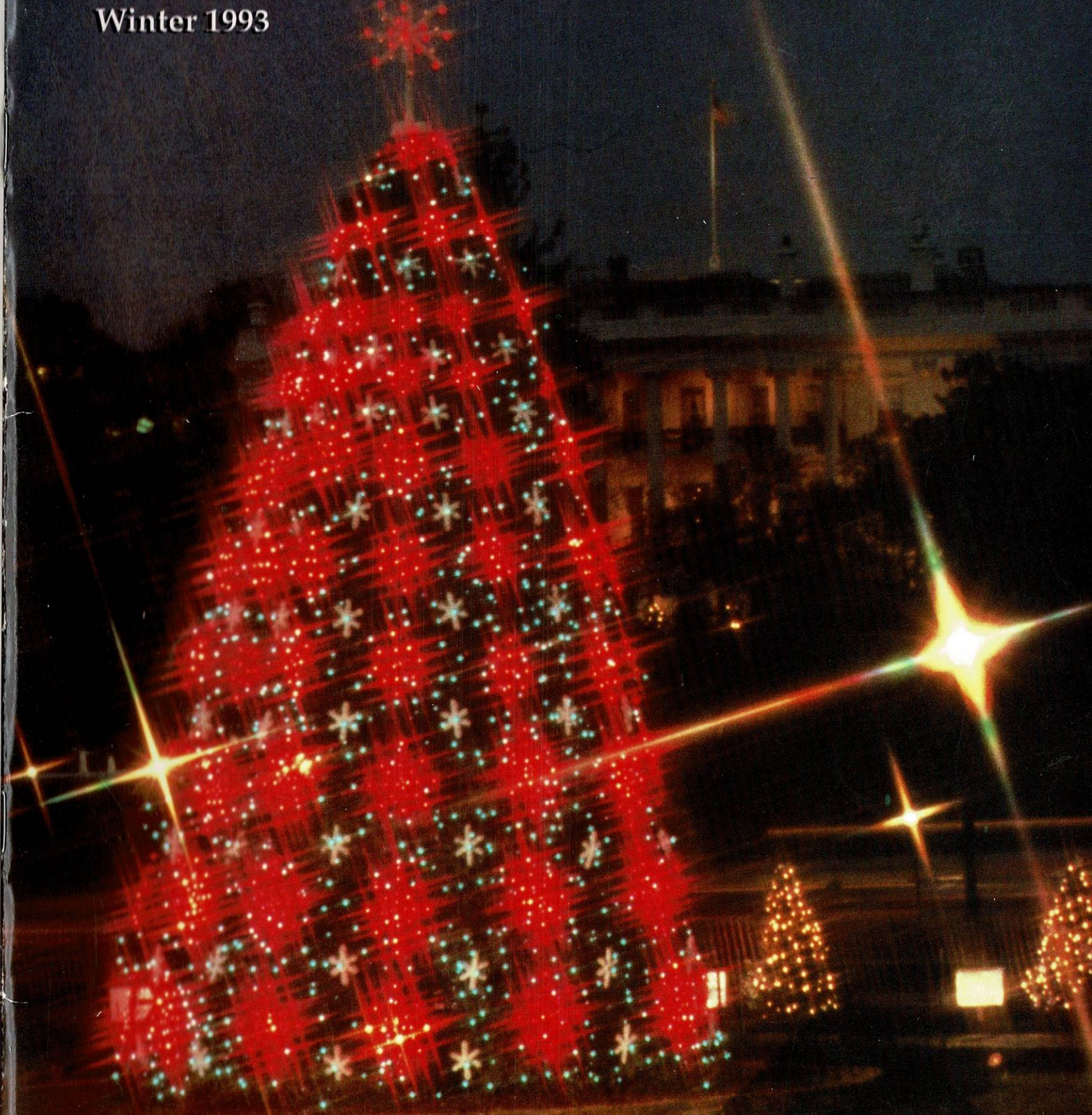
BECKWITH 
Machinery Company

CLARKSBURG, WV • 304-842-2222



Green Lands

Winter 1993



**MANNESMANN
DEMAG**



YOUR TERRITORY IS DEMAG TERRITORY.

To an area widely dedicated to using Demag excavator technology and experience, we in turn commit our vast resources to the individual companies and Demag dealers of the Appalachian mining region. Demag's West Virginia branch devotes technical expertise and spontaneous product support to its surrounding region.

Demag's parts and service branch is strategically located in the Kanawha Valley, just 13 miles west of Charleston.



- Reliable 24-hour-a-day service and optimum parts availability.
- Fast, efficient parts accessibility through computerized inventory control and ordering.
- Local Demag-trained service technicians dedicated to the highest availability of all Demag excavators.

Regional product support is a Demag commitment.

Demag hydraulic excavators in 5.6- to 44-cu. yd. capacities for loading 35- to 240-ton trucks. Shovel and backhoe configurations available.

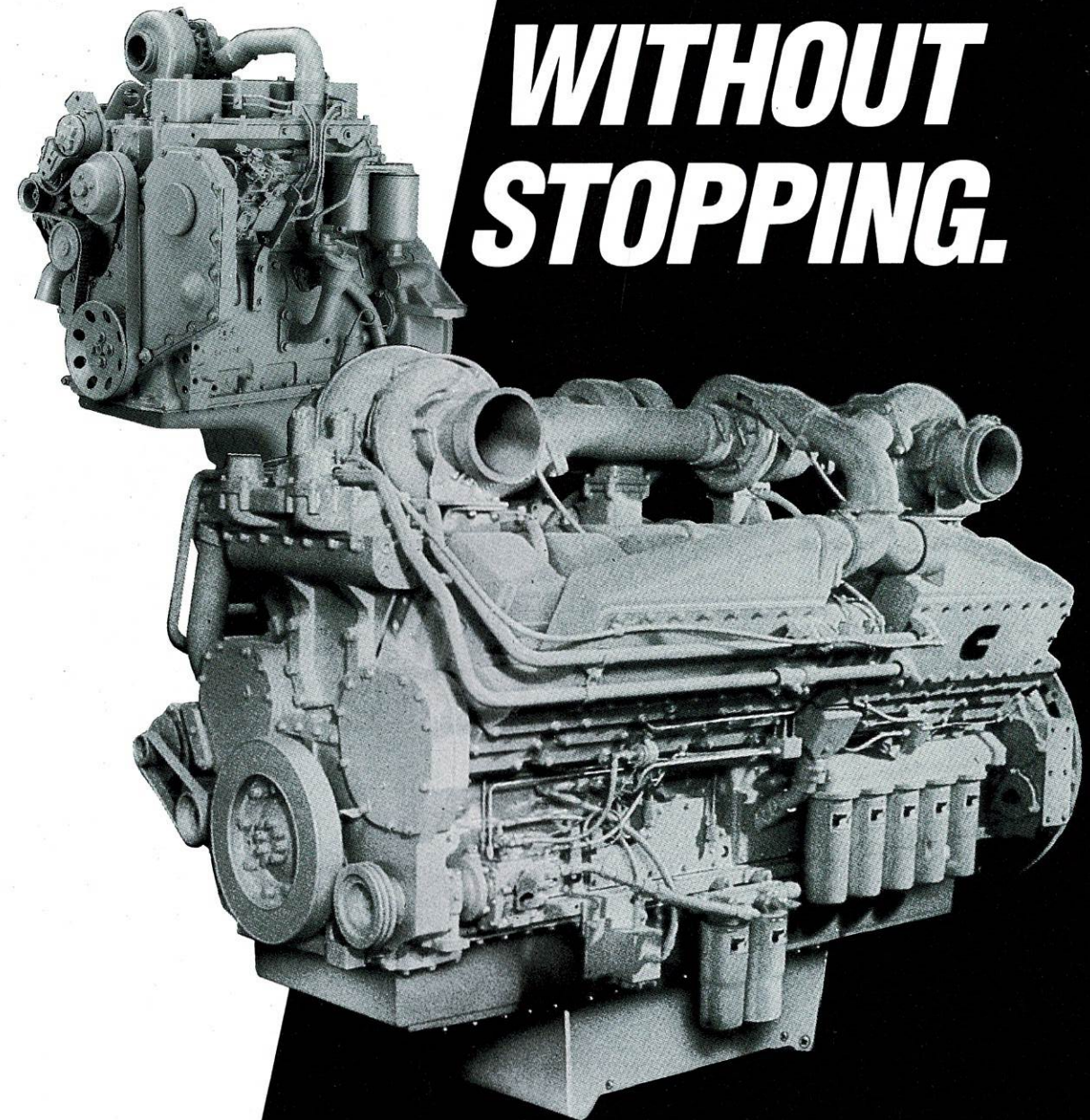
- West Virginia branch
- Recent machine population

Mannesmann Demag Corporation
Construction Machinery Division
Kanawha Valley Distribution Center
4210 1st Avenue • Nitro, WV 25143
Parts: (304) 755-0164
Service: (304) 755-0165
Telefax: (304) 755-0170

Demag's Illinois corporate, parts and service headquarters: (708) 766-4431

a mannesmann technology company

GO FROM 76 TO 2000 WITHOUT STOPPING.



With a continuous series of diesel engines, there's no gap in Cummins diesel power. From 76 to 2000 horsepower, there's a Cummins that's perfect for your needs.

From midrange engines to the high-horsepower giants, all Cummins engines are packed with performance, fuel efficiency and durability.

To find the Cummins diesel that's just right for you, call 1-800-DIESELS or see your closest dealer or distributor.

Cummins
Cumberland
Inc.

South Charleston, WV
(304) 744-6373

Fairmont, WV
(304) 367-0196

Bristol, VA
(703) 669-4200

Louisville, KY
(502) 491-4263

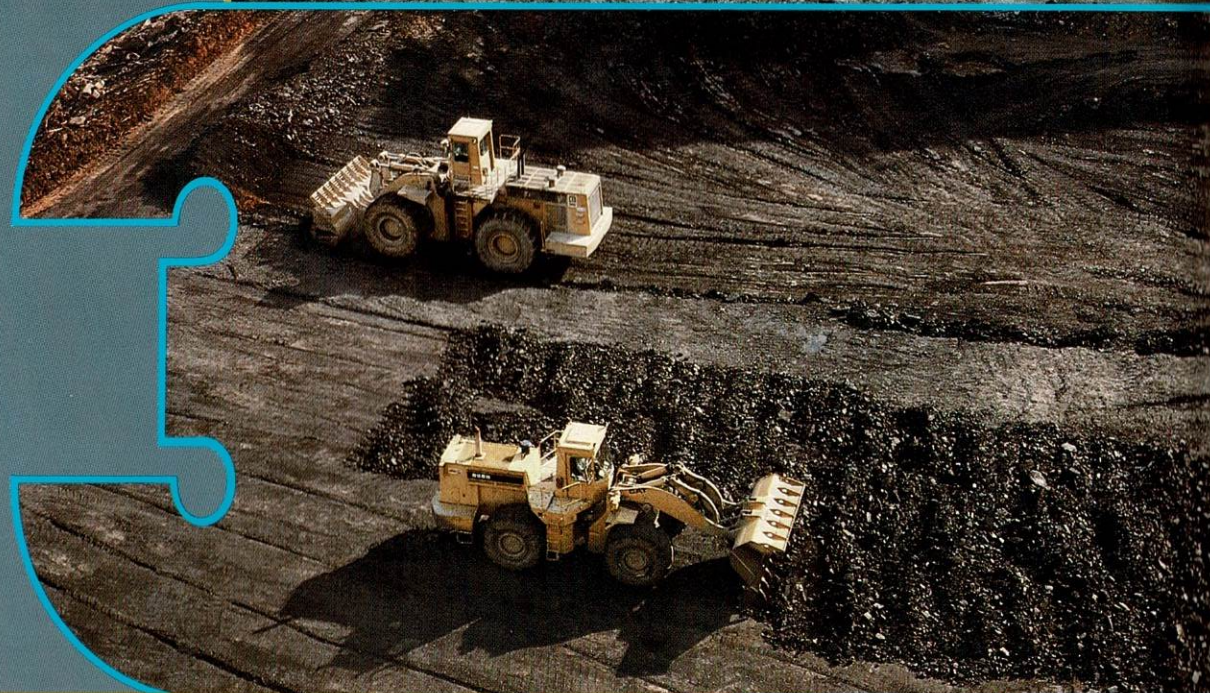
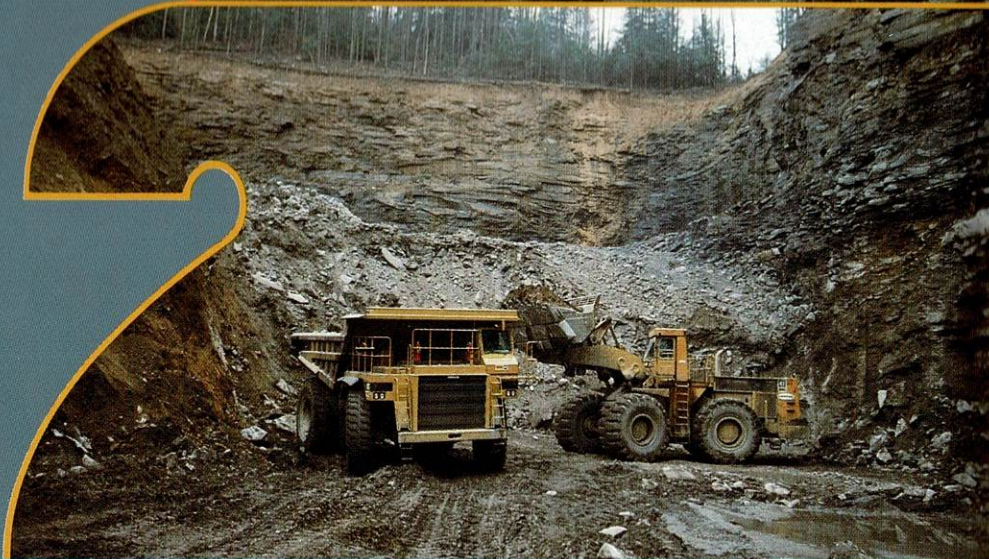
Hazard, KY
(606) 436-5718

Evansville, IN
(812) 867-4400

Nashville, TN
(615) 366-4341

Knoxville, TN
(615) 523-0446

**When You
Can't Afford
To Miss
A Shift**



Carter Machinery Company, Inc.
(703) 679-1010
(800) 768-8380

Carter **CAT**

Chesapeake, VA Fredericksburg, VA Norton, VA Richmond, VA Warrenton, VA Lewisburg, WV
Fishersville, VA Newport News, VA Oakwood, VA Salem, VA Bluefield, WV Pineville, WV

Green Lands

Volume 23 Number 1

- 6** West Virginia trees light up Capitol Christmas
- 13** Arch involved in West Virginia
- 24** AML funded into 21st century
- 34** Elk River Art Club beautifies mine seals
- 37** Coal Calendar

Green Lands
is a quarterly publication of the
West Virginia Mining & Reclamation Association,
with offices at 1624 Kanawha Boulevard East
Charleston, West Virginia 25311
(304) 346-5318, FAX 346-5310.



Our Cover
When the Christmas trees are lit
in the nation's capitol, West Virginia will be
represented by fifty-seven trees from a tree
farm and former mine site. Our
cover story begins on page 6.

WVMRA Staff & Board of Directors

President
Benjamin C. Greene

Vice President
K.O. Damron

Assistant to the President
Patty Bruce

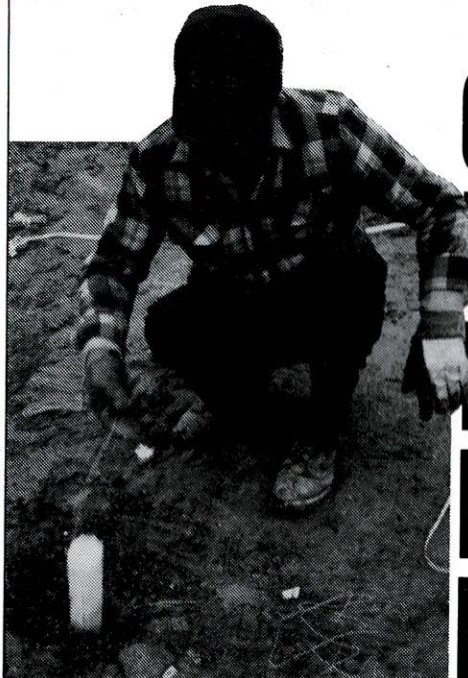
Business Manager
Mary Ann Steele

Editor
Daniel Miller

Chairman
Gerald W. Ramsburg - Clarksburg
First Vice Chairman
James J. LaRosa - Clarksburg
Second Vice Chairman
Donald K. Cooper - Charleston
Secretary
J. R. Bryan - Lebanon, VA
Treasurer
J. M. Compton - Clarksburg
Associate Division Chairman
D. Stephen Walker - Charleston

Directors
J. W. Anderson - Princeton
D. P. Cartwright - Naugatuck
R. D. Cussins - Bayard
B. E. Dearth, Jr. - Bridgeport
W.A. DiRico, Jr. - Yolyn
D. R. Donell - Weirton
J. J. Faltis - Morgantown
R.D. Fitch - Charleston
J. H. Harless - Gilbert
P. F. Hutchins - Columbus, OH
T. W. Hylton - Beckley
J. C. Justice - Beckley
M.J. Ladd - Wharnclyffe
P. A. Laskody, Jr. - Morgantown

J. W. Mullen - Bluefield
K. D. Nicewonder - Clintwood, VA
J. B. Rader - South Charleston
D. B. Scherder - Charleston
L. A. Streets - Mt. Storm
E.F. Surgeon - Louisville, KY
J. C. Supcoe - Charleston
J.H. Wellford - Charleston
K.G. Woodring - Huntington
S. R. Young, III - Gilbert
Honorary Members
C. E. Compton - Clarksburg
L. W. Hamilton, Jr. - Hansford
F. B. Nutter, Sr. - Pompano Beach, FL



GET THE BLASTING POWER OF MT. STATE BIT SERVICE

When it comes to professional service and dependable products, Mt. State Bit Service simply blows the competition away! Call us today for on-site evaluations and cost estimates on our:


- Complete Line of RAVEN PUMPS
- Complete Line of Explosives and Accessories
- Contract Drilling Services
- Contract Blasting Services

Our mix plant facilities provide packaged ANFO products for both wet and dry conditions with various levels of densities and energies.

Get the blasting power of Mt. State Bit,
Call 1/800/352/8322

Morgantown, WV
Hurricane, WV
Grantsville, MD
Fairbanks, PA

Mt. State Bit Service Inc., Morgantown, WV (304) 296-1783




THINK OF THE 830E AS THE COMPETITION'S 1993 MODEL.

Only the 240 ton (218t), electric drive 830E offers you such a balanced package of innovative performance features, making it the ultimate low-cost-per-ton producer.

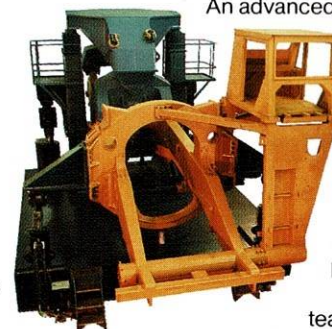
An advanced Detroit Diesel 2200 hp (1640 kW) engine, proven GTA-26 alternator and GE-787 electric wheels deliver unsurpassed efficiency and the longest life in the big truck business.

The industry's most sophisticated, computer aided frame design has produced a frame capable of more hours of trouble-free service than any hauler in the world. And our unique Hydrair® II suspension is proven to extend tire life.

Our unequalled experience, with over 100 million hours logged on electric drive systems, results in easier-to-service, longer lasting trucks that miners rely on more than any other.

And our worldwide support from your Dresser Haulpak® team ensures that the 830E will remain your top, low-cost producer for years to come.

Full-scale
frame testing
assures
long life.



Anderson OF WEST VIRGINIA

For more information on any quality Dresser machine, call the Anderson office nearest you.

CHARLESTON AREA
Route 119 South
Alum Creek, WV 25003
756-2800

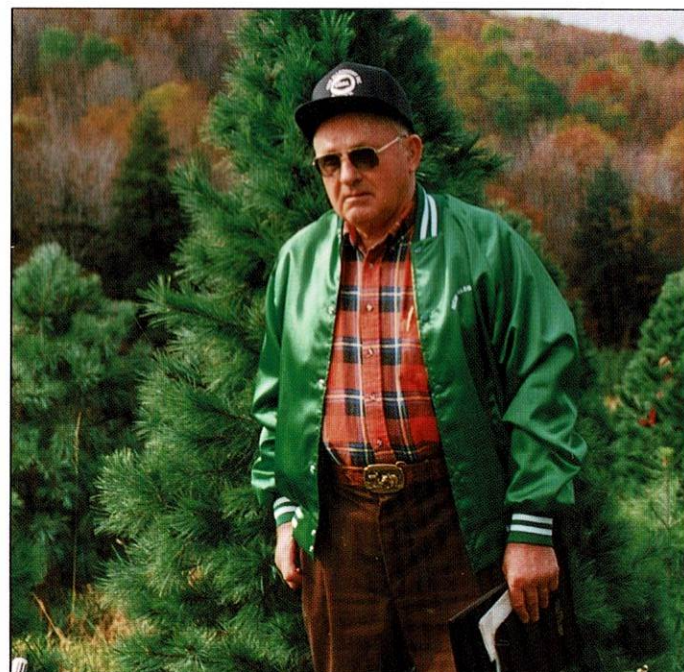
BECKLEY AREA
210 George St.
Beckley, WV 25801
255-6699

CLARKSBURG AREA
Lewis County Ind. Park
Jane Lew, WV 26378
884-7821

DRESSER
HAULPAK DIVISION

Index to Advertisers

Akers Supply.....	36	Mannesman Demag.....	inside front cover
Anderson of West Virginia	5	Marshall Miller & Associates.....	22
Austin Powder.....	18	Massie Reclamation.....	19
Beckwith Machinery.....	back cover	Mt. State Bit Service.....	4
Bell Farms Reclamation Service.....	23	Nell Jean Enterprises.....	36
Cardinal Construction.....	30	New Directions Media.....	37
Carter Machinery.....	2	Ohio Seed.....	23
Cecil I. Walker Machinery.....	20 & 21	Penn Line Service.....	33
Central Appalachian Powder	38	Petroleum Products.....	18
Crown Hill Equipment.....	10	Rish Equipment.....	inside back cover
Cummins Cumberland.....	1	RMI, Ltd.....	22
Eagle Carbon.....	30	Rudd Equipment.....	32
Flat Top Insurance.....	39	Savage Industries.....	40
Heavy Machines.....	12	Stowers & Sons.....	31
Hotsy Equipment.....	19	Terra Engineers.....	37
J & G Seeding	36	TerraSod.....	31
Kanawha Steel & Equipment.....	11		



Lawrence Streets mined the site in the mid 1970's and performed the reclamation which returned the land to productive use.

Santa Claus heard about the Pageant for Peace project and put in an early appearance at the Carl Burgess tree farm.

West Virginia trees light up Capitol Christmas

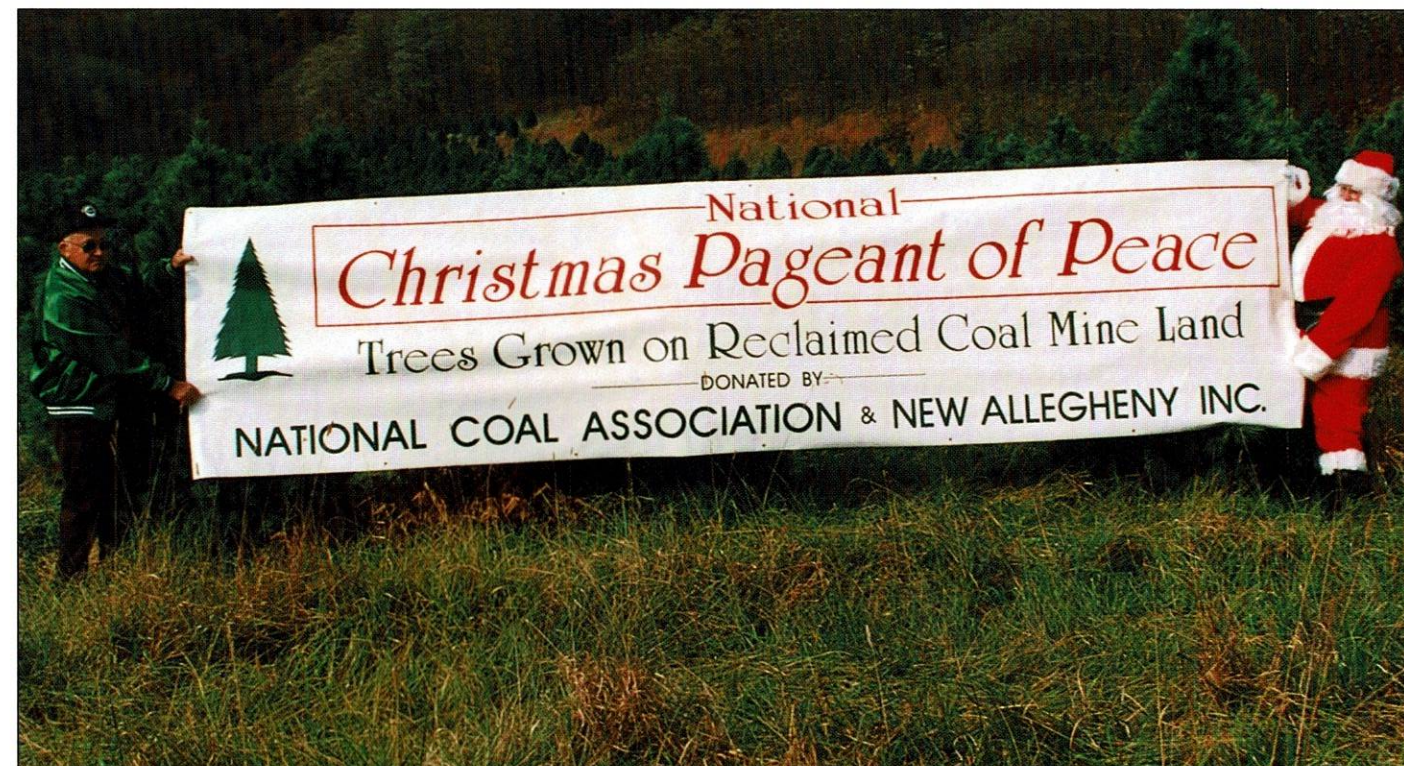
Reclamation by Allegheny Mining still paying dividends

Each year, in early December, the President of the United States turns the switch that lights the national Christmas tree and 57 smaller trees representing the 50 states, the District of Columbia and the U.S. Territories. The annual tree lighting ceremony, which traditionally marks the start of the National Christmas Pageant of Peace, is held on the Ellipse, just south of the White House.

It's the third year in a row that the 57 state and territorial trees and other trees used to landscape the Ellipse for the Pageant were grown on reclaimed coal mine land. Last year, the trees came from Ohio and in 1990, from a Maryland mine site reclaimed by Buffalo Coal of Bayard, West Virginia.

Trees for the 1992 pageant were raised on a former mine site just east of Mt. Storm, West Virginia, near the Grant-Mineral County line. Lawrence Streets, long-time head of Allegheny Mining Corp. (now New Allegheny, Inc.), supervised the mining of 75,000 tons of coal from the 85 acre site in the mid-1970's.

When reclamation was completed, the land was sold to Carl Burgess of nearby Hartmansville, who converted it into a thriving Christmas tree farm. Mr. Burgess, now 87, has nearly 300,000 evergreens on the farm, in various stages of growth, eventually bound for homes and businesses all across the eastern United States.



Lawrence and Santa combined efforts to show the camera what the project was all about.

The selection and transfer of trees was a joint effort on the part of the National Coal Association, the Department of the Interior and the National Park Service, as well as some private citizens of West Virginia.

Some 100 fir trees were taken live from the Burgess farm, thanks to a special tree digging machine provided by Lawrence Streets. "I'm happy to help," he commented, "and I'm proud that these trees are coming from land that we reclaimed. It's living proof that you can mine the land and get more benefits from it after reclamation."

The trees were transported to Washington in a tractor trailer provided by Sites Trucking of Petersburg, West Virginia. Owner Gerald Sites was so enthused with the project that he videotaped the entire thing, from tree digging to D.C. delivery. "I plan to be on hand for the tree lighting as well," he said. "As far as I'm concerned, this says it all about West Virginia's coal industry."

An estimated half million people will attend the tree lighting ceremony. Following the Pageant of Peace, the live trees will be replanted in parks and other public facilities throughout the Washington area.



Santa Claus carefully supervised the tree harvest, which will provide permanent greenery in the nation's capitol.



Carl Burgess has some 300,000 trees of Christmas future in progress on the former Allegheny Mining site.



The West Virginia Christmas trees were taken live, thanks to a digging machine provided by Lawrence Streets, and transported to Washington, courtesy of Gerald Sites and Sites Trucking.

The flick of a switch by the President lights up the Ellipse and the nation's Christmas celebration is underway.



Fifty U.S. states and territories are represented in the Christmas display by trees grown on a West Virginia reclaimed mine site.

Crown Hill Equipment, Inc.

We have the following items in stock for exchange or outright sale:

- 992C - 13.5 cubic yard Rock Bucket
- 992C - Upper and Lower oil sealed bucket pins
- 992C - Lift, tilt and steering cylinders
- Hydraulic cylinders for 988 / 988B / 777 / 769 / 773 / D9G&H / D8H&K / D8L / D9I
- Exchange final drives for D9H S/N/ range 90V and up
- Exchange D9H - 19K "U" blade
- Rebuilt D9H push arms
- We also have access to a wide range of "take off" parts (planetaries, axles, engines, transmissions, torques) for all makes of Cat equipment.
- Hydraulic pumps and motors for Cat equipment along with a complete line of "wear" parts (bucket teeth, cutting edges, adapters, rollers, tracks, etc.)

 **Crown Hill Equipment, Inc.**
Route 61 - Crown Hill, WV 25052
(304) 595-4111
Now Toll Free 1 - 800 - 950-4445



Shown
Actual Size

Control Erosion In Heavy Rains. Conserve Moisture When There Is No Rain.

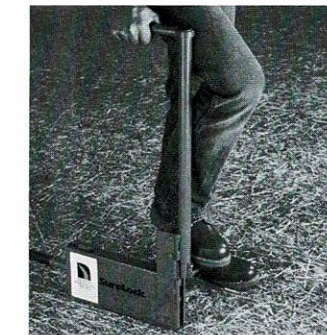
North American Green offers a variety of Erosion Control Blankets to suit a variety of situations:

Just Roll It On



Starting at the top of the slope to be covered just unroll the Blanket. The Blanket should never be stretched so that contact with the soil can be maintained. Follow the simple instructions included with each roll.

Staple It Down



As you unroll the Blanket, staple it firmly to the ground using North American Green Surelock. Generally one staple per square yard will be sufficient. Under adverse conditions more staples might be required. Staple patterns are illustrated in the installation instructions.

Let Nature Do The Rest



North American Green Erosion Control Blankets create an ideal environment for seed to germinate. Because the Blankets are so well constructed, they help prevent the loss of moisture through evaporation, yet because the Blankets are porous, the ground will accept additional moisture through rainfall.

North American Green Products

S75	Straw Blanket for moderate runoff 4:1
S150	Straw Blanket for heavy runoff 3:1
SC150	Straw/Coconut Fiber Blanket for heavy runoff 2:1
SCC225	Straw/Coconut Fiber Blanket with seed for heavy runoff 2:1

C125

100% Coconut Fiber Blanket for extreme conditions and ditches.

P-300

100% Nylon Permanent Ditch Liner

Write or call North American Green for more information on the complete selection of Erosion Control/Revegetation Blankets.

Take the guess work out of erosion control.

CONTACT DISTRIBUTOR'S NEAREST BRANCH

KANAWHA STEEL & EQUIPMENT COMPANY

GENERAL OFFICES
3000 Sissonville Drive
Charleston, W.Va. 25332
P.O. Box 3203 Area Code 304 343-8801

BRANCH
Highway 70 East
Madisonville, Ky. 42431
P.O. Box 144 Area Code 502-821-2634

BRANCH
Old Route U.S. 23 North
Wise, Virginia 24293
P.O. Box 1437 Area Code 703 328-8096

BRANCH
Route U.S. 25 East
Middlesboro, Ky. 40965
P.O. Box 8 Area Code 606 248-2054

BRANCH
106 North Bridge Street
New Martinsville, W.Va. 26155
P.O. Box 288 Area Code 304 455-3430

BRANCH
1517 Mellwood Avenue
Louisville, Ky. 40201
P.O. Box 32 Area Code 502 589-6278

BRANCH
Route U.S. 23 North
Prestonsburg, Ky. 41653
P.O. Box 126 Area Code 606 886-8123



14649 Highway 41 North
Evansville, IN 47711

The inside story on Articulated Dump Trucks from TEREX.



NEW TEREX ARTICULATED DUMP TRUCKS: 5 MODELS, 25 TO 40-TON PAYLOADS

Take a look into the new artic team from TEREX.

With the addition of four new models, we have a size to suit your particular job

needs, from 25 to 40 tons. All are 6x6 models and all feature the unique TEREX designed rear axle suspension system that gives you top TEREX traction in tough terrain.

All models feature fuel efficient power trains, improved operator environment, and advanced vehi-

cle designs that give you top notch, low cost production.

Get the full inside story on the complete range of TEREX artics from your TEREX dealer, or write TEREX, Hudson, Ohio 44236.

Model	HP	Payload Tons
2366	224	25
*2566	224	25
*2766	237	27.5
*3066	275	30
*4066	359	40

*New Models

HEAVY MACHINES, INC.

Mining Division Headquarters
100 Smiley Drive, St. Albans, W. Va. 25177
(304) 755-7000

Branches:

P.O. Box 252
Cadiz, OH 43907
(614) 942-2166/(814) 695-8621

U.S. Hwy. 23 South
Allen KY 41601
(606) 874-0348

2896 Anton Rd.
P.O. Box 1112, Madisonville, KY 42431
(502) 821-0004



ARCH involved in WEST VIRGINIA

Arch of West Virginia has only been around for five years, but the Mountain State subsidiary of Arch Mineral Corp. is well established as one of the state's coal leaders. Arch entered West Virginia in a big way in 1987, purchasing the assets of Diamond Shamrock, which had in turn bought out Amherst Coal Co.

Arch of West Virginia established its headquarters in Logan County and set about creating the complete coal company. In West Virginia, that includes responsible reclamation, safe operation and community involvement.

Reclamation was necessarily a big part of Arch's operation from day one. Logan is an old mining county and mining there means encountering and dealing with some antiquated mining situations.

The major mines acquired in the Diamond Shamrock purchase were the well-established Wylo mine at Lundale and the newer Ruffner operation near Yolyn. Reclamation is well along at both sites.

In addition, the company undertook reclamation of the huge Abe Burgess refuse pile, demolition and removal of the World War I-vintage MacGregor Preparation Plant, sealed and reclaimed the old Hinchman underground mine and began water treatment of an inactive underground mine in Chambers Hollow.

While devoting considerable resources to reclaiming mined out permits, Arch did not neglect production. All together, Arch of West Virginia and its affiliated companies will ship nearly five million tons of coal for 1992, placing it among the top half-dozen producers in the state.

Simultaneously, Arch of West Virginia has placed itself among the industry leaders in safety, and that's no accident. The company conducts extensive safety training and all employees are encouraged to report any possible dangerous situation, no matter how trivial.

Bi-weekly "safety audits" identify potential hazards in equipment and procedures, right down to something as simple as a chipped windshield. The company standard is 100% correction, 85% within ten working days. All safety procedures are reviewed every quarter. Safety is a condition of employment, accompanied by the philosophy that "There are no accidents -- all injuries result are preventable."

As a major player in the state's coal industry, Arch of West Virginia has assumed its rightful place as a community leader in Logan County.

The company has established two "partnership" arrangements with area elementary schools. In 1990, Arch affiliated itself with Mallory School near Man, and in 1991 took on Justice Elementary in Logan. An employee steering committee for each school continues to explore innovative ways to



Arch's huge drag line and jumbo haul trucks have greatly increased efficiency in both mining and reclamation.



enhance the education process. Students have visited completed reclamation sites for "Earth Day" celebrations and toured the entire mining operation as a part of "Career Day" programs.

An "Arch Apple Award" was established to recognize outstanding grades and attendance, with winners treated to a ride on the West Virginia Belle.

The company has also donated computer supplies and equipment, provided Christmas gifts and subsidized school trips for students in need.



Arch is also a co-sponsor of the Eagles Nest program at Logan High School, which sends "role model" high school students to grade schools with a "Stay in school/ stay off Drugs" message. The company has a co-op program with West Virginia Tech, providing part-time employment for engineering students.

In the community at large, Arch was a designated "Pacesetter" for United Way in Logan County, and it set quite a pace.

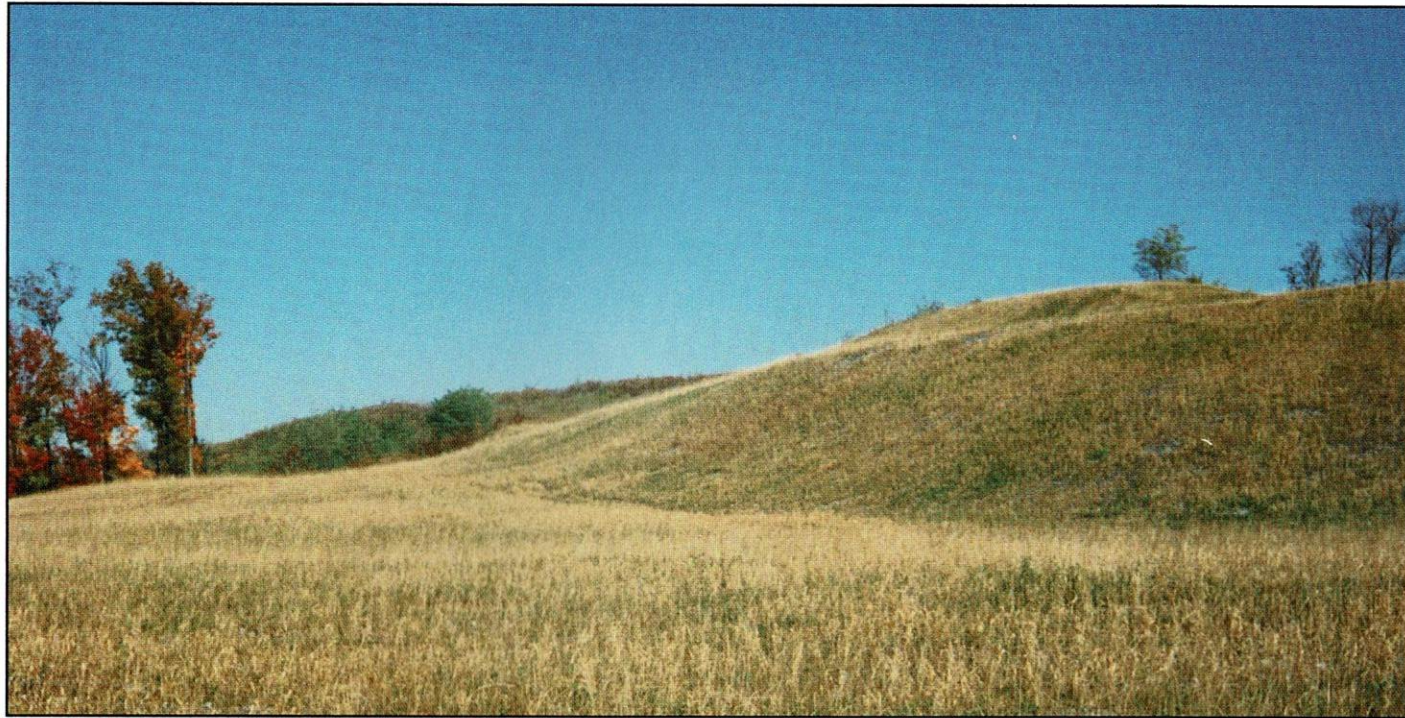
In 1990, the goal was \$20,000 and \$38,000 was raised. In 1991, the goal was to beat 1990 and Arch employees came up with \$51,000 was raised. The United Way recognized this effort with its "Spirit of Logan County" award.

With over 400 employees, Arch of West Virginia has been a welcome addition to the state's economic structure and a tremendous boon to Logan County. With its approach to reclamation, its safety-first work ethic and its record of community commitment, Arch has established itself as a point of pride to the entire coal industry.



Arch utilizes state-of-the-art mountaintop removal and valley fill construction on its Wylo Mine.





Coal extraction on this section of the Wylo Mine, Area 1 near Lundale was completed in early 1992 and now the area is home to deer, turkey, bears, bobcats, foxes and other wildlife.



Arch makes extensive use of sediment cells at its Ruffner Mine, near Yolyn.



Arch of West Virginia voluntarily took on reclamation of the Abe Burgess Refuse Area and did an outstanding job with direct seeding of the refuse material.



Stand back and
Watch Us Grow!

Massie Reclamation, Inc.

- We specialize in
- hydroseeding
 - tree planting
 - straw blowing

P. O. Box 396
Shady Spring, West Virginia 25918

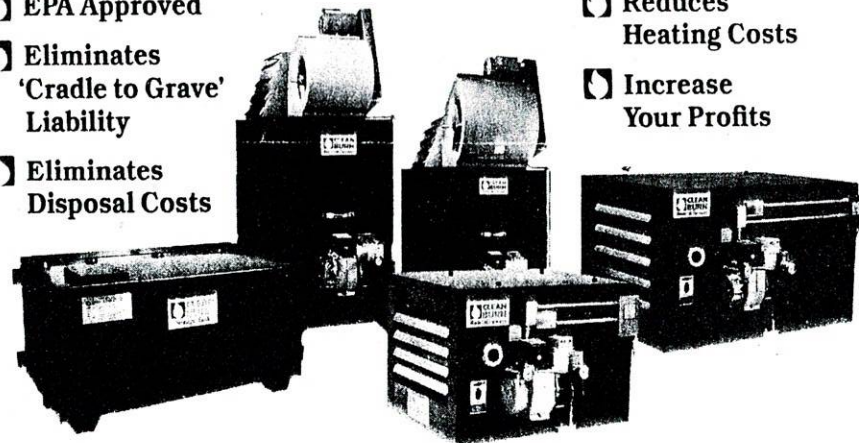
Charles Massie, Owner
(304) 787-3933



WHY YOU SHOULD CONSIDER A WASTE OIL FURNACE.

"It's both environmentally responsible and cost efficient to burn your waste oil."

- ☐ EPA Approved
- ☐ Eliminates 'Cradle to Grave' Liability
- ☐ Eliminates Disposal Costs



- ☐ Reduces Heating Costs
- ☐ Increase Your Profits

FOR A FREE DEMONSTRATION
CALL:

Hotley
EQUIPMENT CO.

CHARLESTON
744-3493

CLARKSBURG
623-6335

BECKLEY
800-369-4687

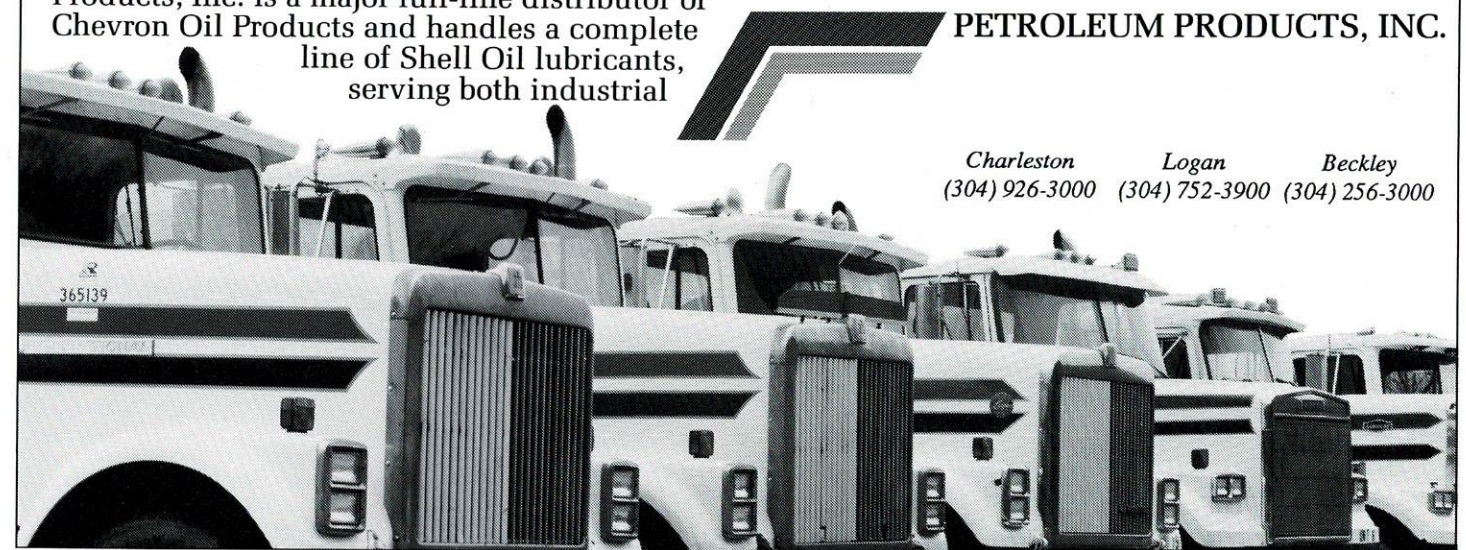
On the move for 50 years.

"Oil is our product, service is our business" is not just a saying at Petroleum Products, Inc. — it's a way of life. Since 1938, we've served the oil needs of coal and other industries in southern West Virginia. Today Petroleum Products, Inc. is a major full-line distributor of Chevron Oil Products and handles a complete line of Shell Oil lubricants, serving both industrial

and retail outlets. We've been on the move for 50 years and we're changing to meet the ever increasing demands of the 1990's. Call us. We're here to serve your needs.

PETROLEUM PRODUCTS, INC.

Charleston Logan Beckley
(304) 926-3000 (304) 752-3900 (304) 256-3000



Professional Technical Service

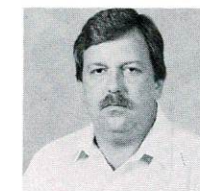
Computer Aided Blast Design
High Speed Photography
Cost Analysis
Blast Casting
On Job Blast Analysis



State-Of-The-Art Products

Latest Emulsion Technology
Gelatins & Dynamites
Detonating Cord
Cast Boosters
Blasting Agents
Non-Electric Initiation
World's Most Accurate Blasting Caps

Explosives of Tomorrow... Today!
IN SOUTHERN AND CENTRAL WEST VIRGINIA CONTACT...



Tom Ables
112 Village Green
Princeton, WV 24740
(304) 425-4512



Ernie Blair
P.O. Box 424
Mt. Hope, WV 25880
Office: (304) 877-2301
Home: (304) 465-0196



Robert Runyon
P.O. Box 98
Chapmanville, WV 25508
Office: (304) 855-4521
Home: (304) 855-9106

The Walker Green File

Operator: Green Mountain Co.
 Location: Mason County
 Recognition: 1991 AML Award
 Impact: Jobs while improving the environment.



Caterpillar D8L
 Dozers were used
 to reclaim the land.



In the 15 years since the AML program began, West Virginia mines have contributed more than \$350 million.



Not long ago, this beautiful view was an abandoned, unreclaimed coal mine. The Green Mountain Co. restored this site and won a 1991 Abandoned Mine Lands Award through the West Virginia Mining and Reclamation Association.

Their effort was part of the Federal Abandoned Mine Lands program

that will pump over \$350 million dollars into West Virginia's economy. This means jobs while improving the environment.

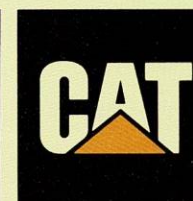
As a West Virginia company, Walker is proud to have provided the Caterpillar equipment used to reclaim this and many other

sites throughout our state. We all need to be on record for keeping West Virginia green by recognizing that there is a delicate balance between mining coal and outstanding reclamation efforts.



Reclamation efforts paying off in Mason County.

Walker



CHARLESTON
 BECKLEY
 PARKERSBURG
 SUMMERSVILLE
 LOGAN
 HUNTINGTON
 JACKSON, OHIO

304-949-6400
 304-253-2706
 304-424-0200
 304-872-4303
 304-752-0300
 304-526-4800
 614-286-7566

What does RMI stand for?

Paul Fox
Kelly L. Griffith
Jack C. Grimm
David Haden

Nancy C. Higginbotham
Fred L. Kellmeyer
John C. Thompson, Jr.

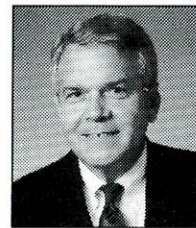
RMI, Ltd.

RMI is a premier company comprised of insurance specialists, who provide a wide range of business and personal insurance products and services — tailor-made to match the needs of your company, your employees, or yourself.

RMI, providing business — and business people — with the protection and coverage they need.

RMI stands for insurance.

David Haden, President of RMI, offers nearly twenty years experience in insurance, specializing in life, professional liability and employee benefits. Give David or one of our other insurance specialists a call today, to find out more about RMI.



David Haden

910 Quarrier Street Suite 212
Charleston, WV 25301 (304) 346-3024

337 Main Street Clarksburg, WV 26302
(304) 623-0696

Let us add a farming dimension to your seeding needs

Bell Farms

Reclamation
Summersville, WV

Specializing in

- Land Reclamation
- Landscape Seeding
- Erosion Control

Robert Gene Bell
Rt. 1 Box 373A
Summersville, WV 26651
Phone (304) 872-3749

Our List of Services Continues to Grow...

- Mineral Exploration & Reserve Evaluations
- Surveying
- Ground Control & Stability Analyses
- Hydrology Studies
- Geophysical Logging Services
- Geotechnical Evaluations
- Coal & Soils Drilling
- Environmental Assessments
- Asset Appraisal & Equipment Selection
- Subsidence Evaluations
- Soils & Rock Testing
- Construction & Structural Design
- Mine Planning & Design
- Engineering Reprographics
- Feasibility Studies
- Mine Roof Control



Geology, Engineering, Geophysics

Locations in Kentucky, Pennsylvania, Virginia, West Virginia

Main Office • 703/322-5467 • P.O. Box 848, Bluefield, VA 24605-0848

606/263-2855 • 412/788-8778 • 703/679-7343 • 304/925-0507

Depend upon
The Ohio Seed Company
for all reclamation seed
high quality and prompt delivery



TOLL FREE
1-800-879-3556

The Ohio Seed Company

P.O. Box 87
West Jefferson, Ohio 43162
(614) 879-8366



Berry Branch - Raleigh County

Contractor - Pioneer Construction

AML funded into 21st century

The Abandoned Mine Land Reclamation Fund, established by the Surface Mine Control and Reclamation Act of 1977, has officially been extended well into the 21st century. The program was originally due to expire a few months ago, but last year Congress enacted an extension through 1995. Earlier this year, a provision of the National Energy Act established a new cutoff date of 2004.

AML is funded, at no cost to the individual taxpayer, by a special assessment of 35¢ a ton on surface mined coal and 15¢ a ton on underground production. Due to the lag time between collection of the tax and final disbursement of funds, AML is assured of work until at least 2010 or so.

Through a complicated federal formula, individual state programs can expect to get back about half of the funds collected from state coal operators. West Virginia mines have now paid more than \$370 million into the fund. West Virginia AML is now operating with \$22.3 million appropriated in fiscal year 1992 and expects a similar amount for the coming year.

The major impetus of West Virginia's AML program has been the elimination, regrading and revegetation of old refuse piles, some dating back to before World War II. In

recent years, however, the program has broadened its scope somewhat. Clean water has become a priority. In early 1992, AML completed a major project, in cooperation with the Logan Public Service District, in which contractors laid pipe and installed fire hydrants along a nine mile stretch between Lyburn and Taplin in Logan County. The operation successfully countered adverse effects on drinking water by inactive underground mines and simultaneously added measurably to fire protection service. A similar project is currently underway in Randolph County.

To date, the state program has completed 339 projects, with 25 more underway and another 25 in the design or bidding stages. A total of 3,942 acres have been reclaimed, with most of the contract construction done by private West Virginia companies. Though the tax adds a significant burden to the overhead of coal producing companies, the success of the AML program in West Virginia is an example of the best cooperative relationship between government and industry. The companies whose work appears on the following pages are to be commended, as are the supervisory personnel of the AML section of the West Virginia Division of Environmental Protection.



The Abandoned Mines Lands Program is dedicated to transforming sites like that of Bear Run in Gilmer County into scenes like the former Galloway Refuse Pile in Barbour County (shown below).



Galloway Refuse - Barbour County

Contractor - J. F. Allen Co.

Stowe Structures - Logan County

Contractor - **McCoy Construction**

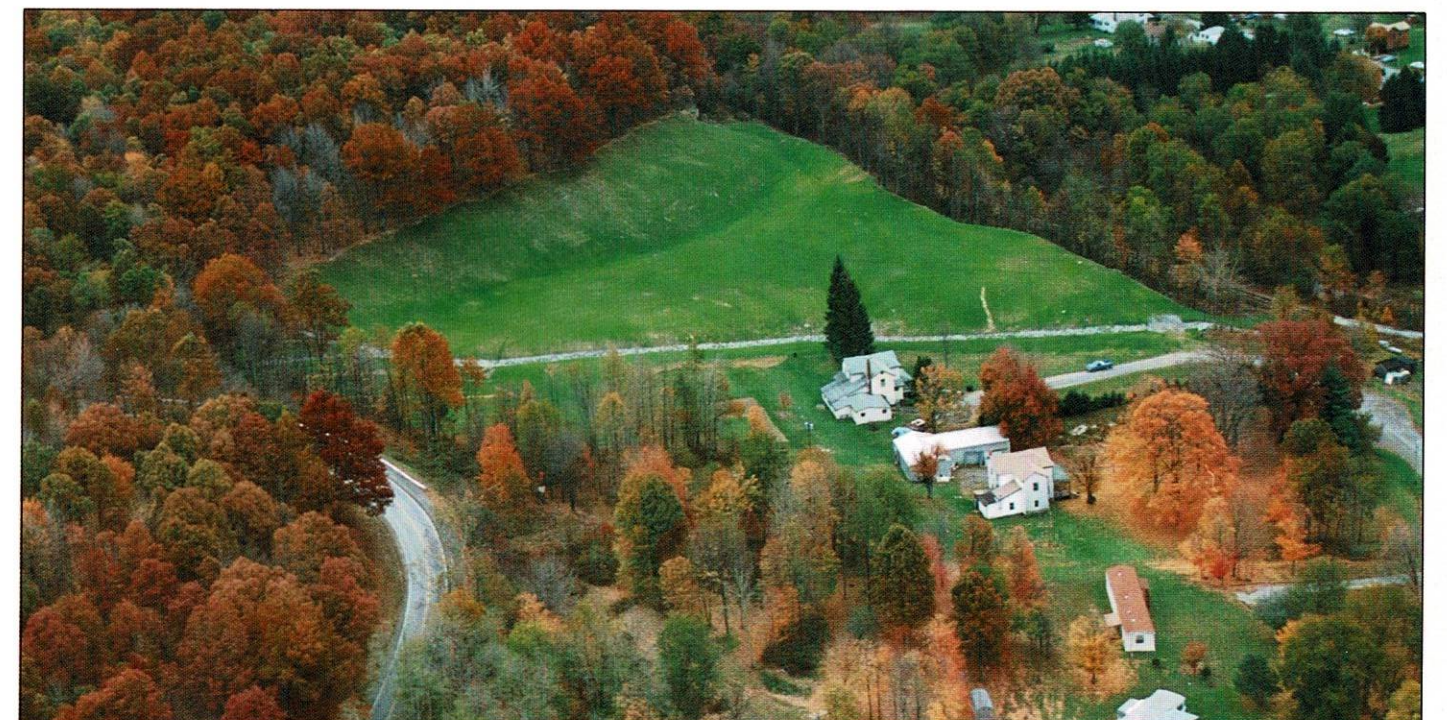


East Gulf Refuse - Raleigh County

Contractor - **Vecellio & Grogan, Inc.**

Coalton 2 - Randolph County

Contractor - **Kanawha Scales & Systems, Inc.**



Coalton 3 - Randolph County

Contractor - **Kanawha Scales & Systems, Inc.**

Amherstdale Complex - Logan County

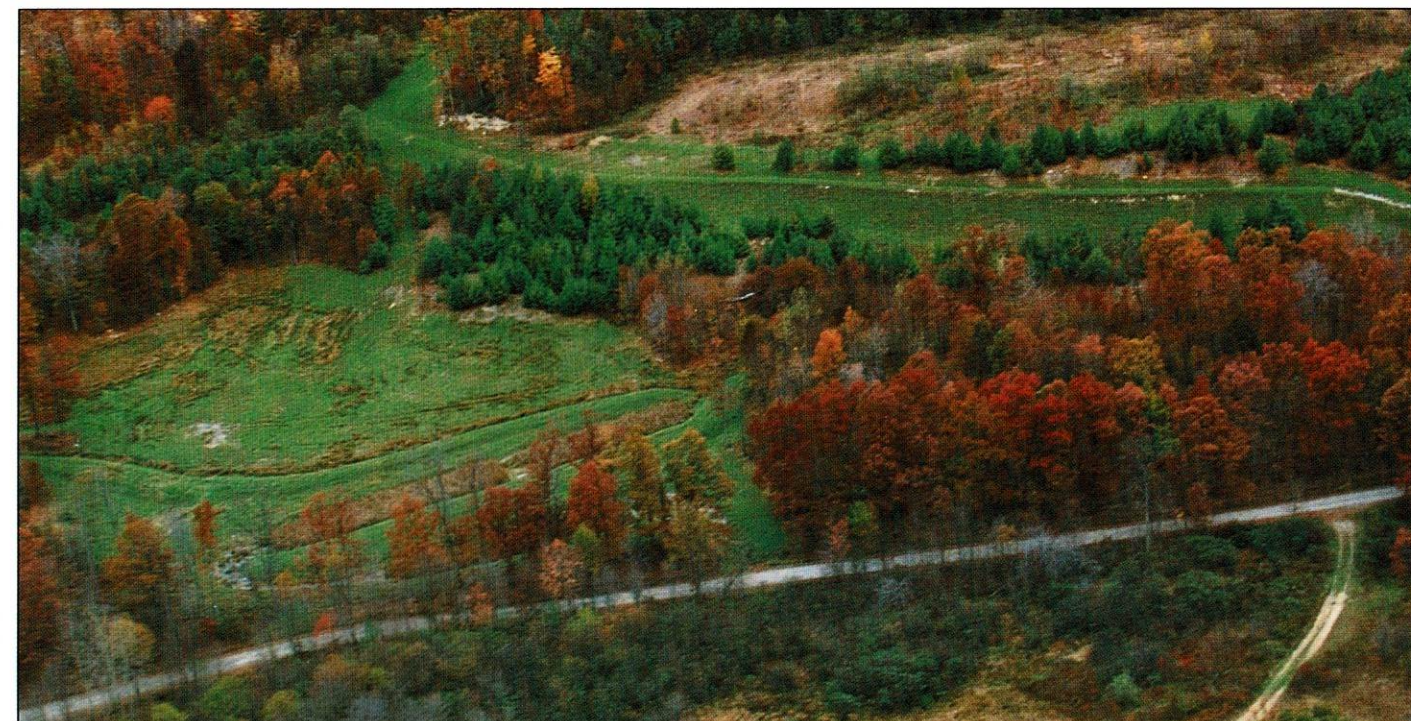
Contractor - **Battle Ridge Co.**



Itmann Refuse Pile - Wyoming County Contractor - **Vecellio & Grogan, Inc.**

Pierce Wetland - Upshur County

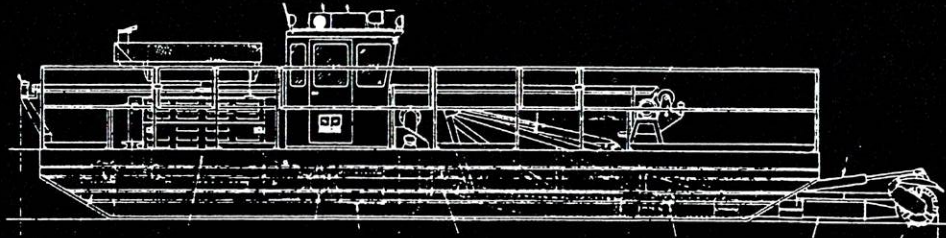
Contractor - **HJC Corp.**



Dorsey Gower - Barbour County

Contractor - **General Paving**

Cardinal Construction Company Hydraulic Dredging Services



Advantages of hydraulic dredging over conventional sediment removal:

- Quick mobilization and setup
- Ability to pump up to one mile away without trucking
- Entire pond is cleaned, not just perimeter
- Pond can remain in operation during dredging
- System can be used on large or small impoundments
- Pond can be used on remote sites where access is a problem
- Wide ranges of material type can be removed

P. O. Box 425, Nitro, WV 25143 • (304) 755-5366 • FAX 755-3453

Erosion Control At Its Best With ENVIROSEAL

- Soil stabilization during revegetation
- Dust control
- Erosion control -- coal storage
- Coal pile freeze prevention



• HYDROSEEDING & SOD PRODUCTION •

CHARLIE PRICE
President

P. O. Box 90 Malden, WV 25306 304-925-4753

Maintenance Of Vegetated Areas

- Reseeding
- Fertilization
- Liming

Refuse Treatment For Revegetation With Or Without Soil

Wildlife Seeding



EAGLE CARBON, INC.

Caustic Soda • Anhydrous Ammonia • Soda Ash Briquettes
Environmental Consultants • Quicklime
Road Oyl (for dust control and road stabilization)

Todd A. Dean • Highway 41 • Box 1636 • Summersville, WV 26651 • 872-1646



Stowers & Sons

TRUCKING

- Heavy Hauling
- Boom Trucks
- Winch Trucks
- Dump Trucks
- Water Trucks

EXCAVATING

- Construction
- Reclamation
- Hydroseeding
- Pipeline Construction
- Equipment Rental

P.O. Box 368
Hamlin, WV 25503

Hamlin 304-824-5136
Charleston 304-727-4721

When reliability counts, count on the Hitachi EX3500 from Rudd Equipment.



The Hitachi EX3500 hydraulic shovel means rugged, reliable performance and high availability that you can count on. That's why so many mine managers, owners, engineers and operators talk to Rudd Equipment for their mining machinery needs.

Extra durability all-around. Like all Hitachi products, the EX3500 features unmatched durability all-around. Extra durable front attachments, an extra tough undercarriage and more will give you high availability.

Reliable hydraulics. The EX3500 incorporates advanced, high-speed hydraulics that provides the reliability that will make your jobs simpler, faster and more productive. In addition, the EX3500 utilizes newly designed electronics and hydraulics systems

that ensure extremely smooth and productive operations.

This chart shows you why:

Weight	Horsepower	Bucket PCSA heaped	
		Shovel	Backhoe
723,000 lbs.	1,684 PS	23.5-32.7 cu. yd.	22.2-32.7 cu. yd.

Rudd reliability throughout. Rudd Equipment is a powerful partner in the tough business of producing coal. That means a total commitment to fast, helpful parts and service response to keep your EX3500 productive and profitable.

To find out how Rudd can make the difference for you, call one of our offices today.

Louisville, KY
(502) 456-4050

Corbin, KY
(606) 528-9440

Allen, KY
(606) 886-1276

Evansville, IN
(812) 867-6661

Indianapolis, IN
(317) 247-9125

Fort Wayne, IN
(219) 482-3681

St Louis, MO
(314) 487-8925

Pittsburgh, PA
(412) 322-1112

Clearfield, PA
(814) 765-8500

Nitro, WV
(304) 755-7788

RUDD
EQUIPMENT COMPANY

*The Rudd difference is performance.
Experience it for yourself.*

Restore Natural Beauty



We're a proven leader in land and mine surface reclamation. And we make it easy. For over 35 years, we've been giving nature a hand with seeding, mulching, and landscaping.

We're committed to customer satisfaction. Our long term customers stand as proof. And if that's not enough, just ask to see one of our completed sites. We bring beauty to places you would never dream possible.

We're reliable, yet innovative. We're Penn Line Service.

So for your next reclamation project, call 800-448-9110 and ask for Ron Hill. Let us help you restore natural beauty.

PENN
LINE SERVICE INC.

Diverse Dimensions in Specialty Contracting

Scottsdale, PA 15683 • 412/887-9110



Elk River Art Club Beautifies Mine Seals



In 1988, Kimberly Industries, Inc. took a contract with West Virginia's Abandoned Mine Lands program for the Mt. Olive Portals Project, which involved sealing up old mine openings. Kimberly did a fine job, but earlier this year, a local art club decided to take the reclamation a step further.

After getting permission from AML, the Elk River Art Club took brushes in hand and painted a "four seasons" mural over the concrete block seals, creating an attractive and unique bit of West Virginia scenery.

For interested tourists, the artwork is located just off the Big Chimney exit of I-79. Northbound, turn right off the exit, take a quick left, and it's right there on your right. Southbound, go left off the exit and take the first left.



MAGNETITE For Your PREP PLANT

SERVICE
IS THE
HEART
OF OUR
BUSINESS

Akers Supply, Inc.
Matewan, W. Va.
304/426-4422

Akers Magnetite, Inc.
Ceredo, W. Va.
304/453-2222

SEEDING, MULCHING, FERTILIZING, TREE PLANTING

J & G Seeding, Inc.
CABIN CREEK, WEST VIRGINIA 25035

GLENN CHAMBERS
JOHN CHAMBERS

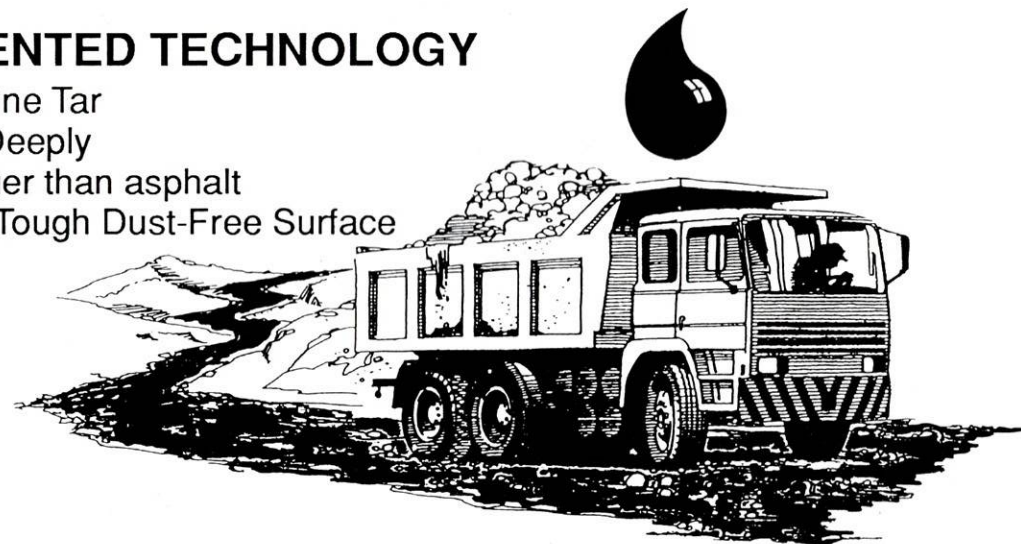
PHONE 595-1509

Already Proven and Accepted by Operators and Regulatory Officials Alike

ROAD OIL

NEW PATENTED TECHNOLOGY

- Made with Pine Tar
- Penetrates Deeply
- Binds Stronger than asphalt
- Results in a Tough Dust-Free Surface



EASY TO USE

- Protects the Environment
- Economical
- Just dilute and spray from an ordinary water truck

For more information, or to place an order,
call your Local Distributor



Coal Calendar

January

11-12 **Analysis of Slopes by REAME and SWASE on a PC**, Lexington, KY, contact Mary Lou Johnson, University of Kentucky, OISTL, 643 Maxwellton Court, Lexington, KY 40506, (606) 257-2846, FAX 258-1049.

28-31 **Semi-Annual Meeting, West Virginia Mining & Reclamation Association, Turnberry Isle Resort & Club**, Aventura, FL, contact Patty Bruce, WVMRA, 1624 Kanawha Blvd. E., Charleston 25311, (304) 346-5318, FAX 346-5310.

February

2-4 **Siting and Design of Solid Waste Landfills**, Lexington, KY, contact Mary Lou Johnson, University of Kentucky, OISTL, 643 Maxwellton Court, Lexington, KY 40506, (606) 257-2846, FAX 258-1049.

10-12 **20th Annual West Virginia Mining Symposium**, Holiday Inn - Charleston House, Charleston, contact Patty Bruce, WVMRA, 1624 Kanawha Blvd. E., Charleston 25311, (304) 346-5318, FAX 346-5310.

23-26 **International Erosion Control, 24th Annual Conference and Trade Exposition**, Westin Hotel, Indianapolis, IN, contact IECA, P. O. Box 4904, Steamboat Springs, CO 80477, (303) 879-3010, FAX 879-8563.

May

16-19 **American Society for Surface Mining & Reclamation, 10th Annual Meeting**, Spokane, WA, contact Mary Lou Johnson, University of Kentucky, OISTL, 643 Maxwellton Court, Lexington, KY 40506, (606) 257-2846, FAX 258-1049.

*Specializing in Media and Public Relations for the Coal Industry.
Government Relations, Polling, Crisis Management*

NEW DIRECTIONS MEDIA

2 Port Amherst Drive
Charleston, WV 25306
(304) 925-6141 FAX (304) 926-1136

Leslie H. Milam

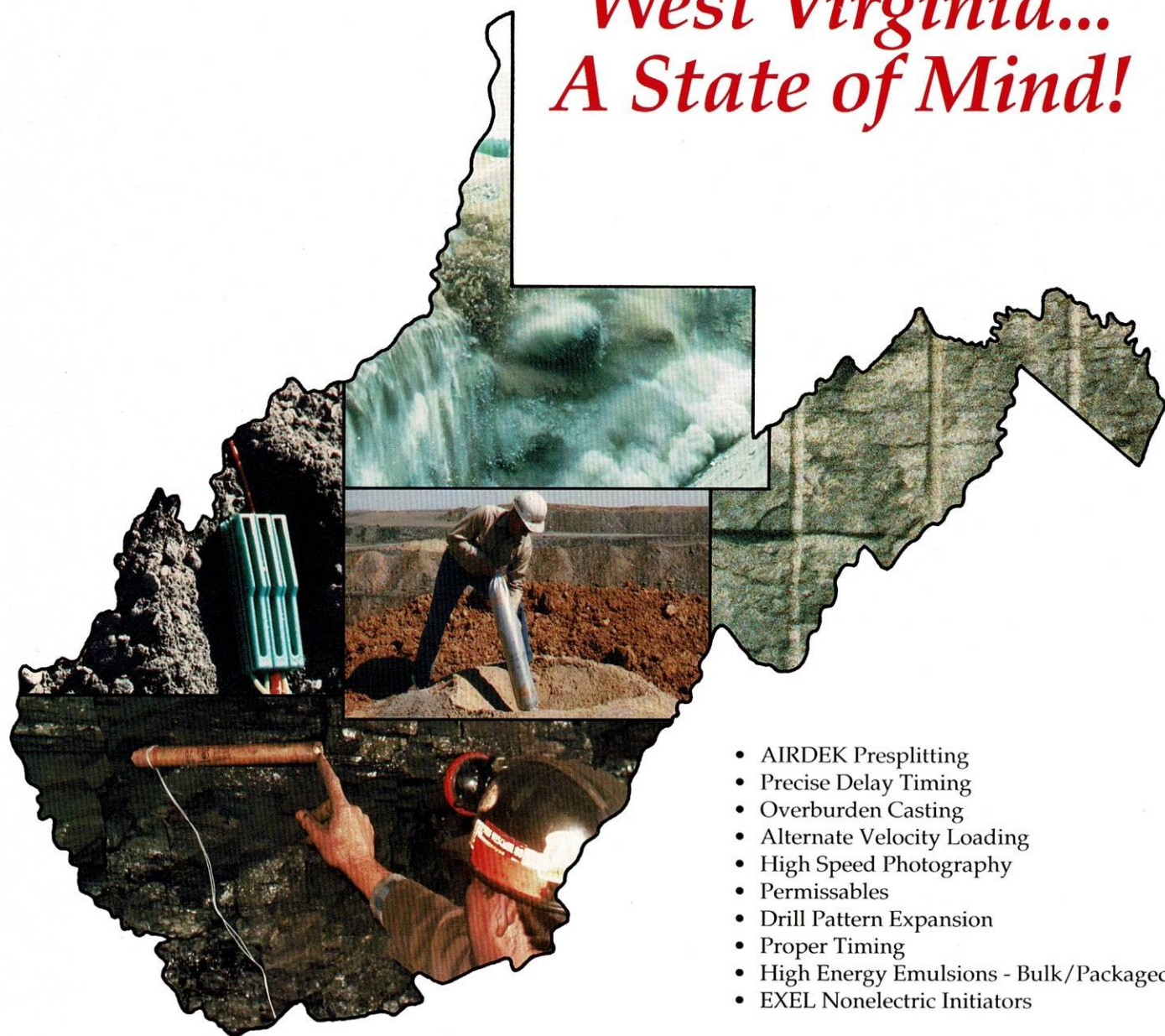
Nelson A. Sorah



George A. Hall, Ph. D., P. E. • Ira S. Latimer, Jr., Geologist

1624 1/2 Kanawha Boulevard, East
Charleston, WV 25311
(304) 346-7035

West Virginia... A State of Mind!



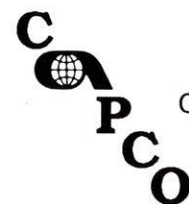
- AIRDEK Presplitting
- Precise Delay Timing
- Overburden Casting
- Alternate Velocity Loading
- High Speed Photography
- Permissables
- Drill Pattern Expansion
- Proper Timing
- High Energy Emulsions - Bulk/Packaged
- EXEL Nonelectric Initiators

West Virginia Explosives... A State-of-the-art Explosives Distributor

Call us for an on-site evaluation of your drilling and blasting program.
Bruce Wood, Vice President • Beckley, West Virginia • (304) 252-8505

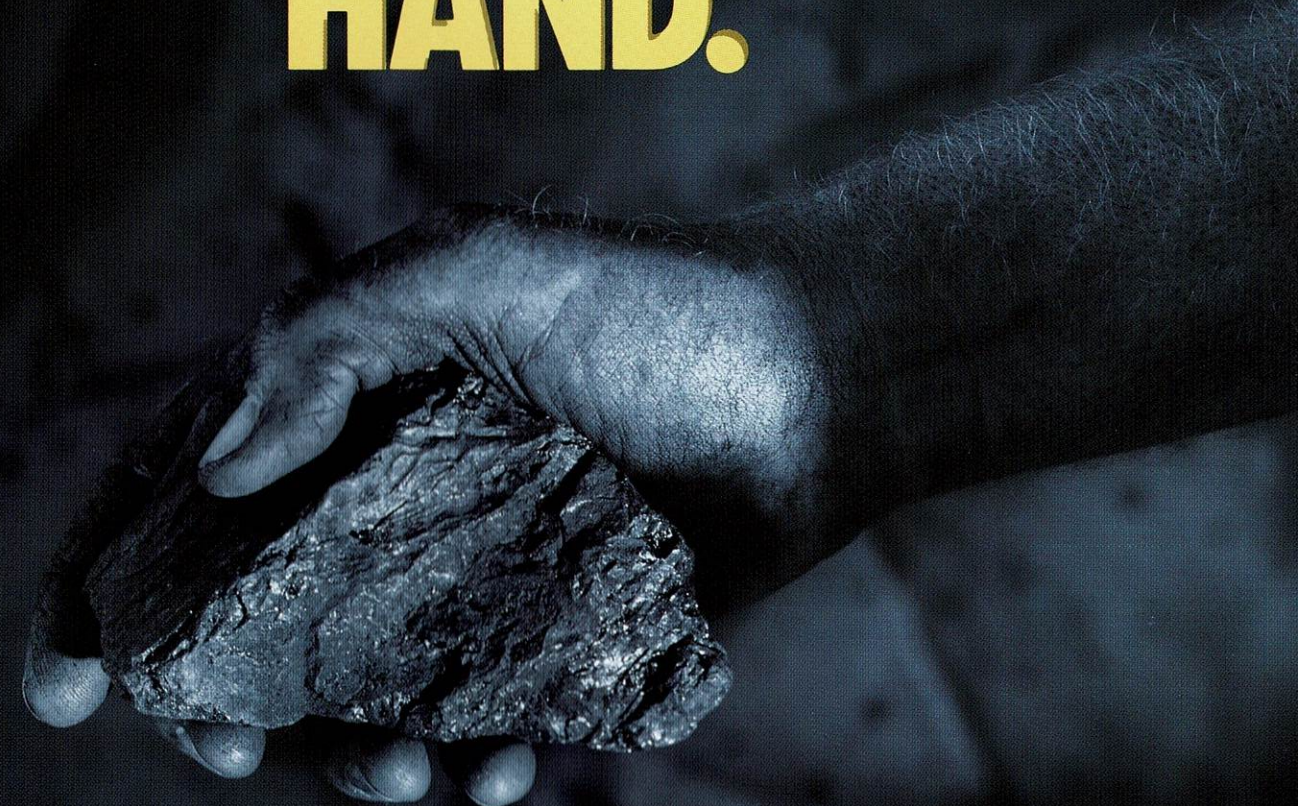


A distributor of ICI explosives products



Central Appalachian Powder Co. Inc.

A HELPING HAND.



FROM START TO FINISH.



We know the coal business! We have the markets and the expertise to do the job. From start-up to the final reclamation project, we make it our business to know your business, inside and out.

We have specialists who can lend valuable assistance in a variety of areas including the all-important reclamation bonds.

If you are in the coal business and need an agent that can give efficient and professional service to your reclamation bond needs, then you should be doing business with Flat Top Insurance.



MORGANTOWN, WEST VIRGINIA • 304/598-3660
BLUEFIELD, WEST VIRGINIA • 304/327-3421
CHARLESTON, WEST VIRGINIA • 304/346-0414
PRINCETON, WEST VIRGINIA • 304/425-2176

WEST VIRGINIA • VIRGINIA • TENNESSEE • KENTUCKY

Do You Have A Weak Link?

Any coal supply chain is only as strong as its weakest link. In many cases, the weak links are the multiple entities involved in the transportation and handling of coal. Determining responsibility for problems such as unnecessary rehandling, coal degradation, contamination, and the like can be the result of such weak links.

Savage takes on these responsibilities by providing the Total Systems Approach. We produce innovative solutions to strengthen the links in the coal supply chain between coal producers and coal consumers. We utilize specially designed trucks and facilities to improve truck loading, hauling, and unloading operations.

We install and operate truck and rail coal handling facilities. In short, we take total responsibility for all transportation and handling which allows you to do what you do best -- mine coal or produce power.

Please give us the opportunity to evaluate your coal supply chain. You never know when a weak link needs to be replaced.

Founded in 1946, **Savage Industries** today moves more than 25 million tons of material, including 20 million tons of coal and petroleum coke. Services are provided to customers nationwide from more than 30 terminals.



For more information contact:

David G. Wolach
Executive Vice President
— Development

Savage Industries, Inc.
Corporate & Central Mktg Office
5250 S 300 W, Suite 200
Salt Lake City, Utah 84107
(801) 263-9400
FAX (801) 261-8766

Gerald E. Vaninetti
Vice President
— Business Development

Savage Industries, Inc.
Eastern Mktg Office
121 Prosperous Place,
TownOffice Two
Lexington, Kentucky 40509
(606) 263-4010
FAX (606) 263-1828



The Drill For Infinity...

Reedrill And Rish Offer New Drill Team.

Rish, a veteran construction and industrial equipment distributor, has teamed up with REEDRILL, the quality name in blasthole drills. Rish is now distributor for REEDRILL's full line of blasthole drills throughout West Virginia and southwest Virginia.

REEDRILL's "Infinity Series" blasthole drills offer a number of advantages over the competition.

- **Longer Structural Life**
- **Stronger Undercarriage**
- **Superior Ratios**
- **Ease of Maintenance**
- **Better Comfort and Control**

Contractors throughout West Virginia and Virginia now have a clear cut choice when looking for down-hole drills. With the new REEDRILL-RISH team now available, customers can count on quality from start to finish. REEDRILL's reputation for quality in manufacturing the best blasthole drills on the market and Rish Equipment Company's track record for quality product support for more than 60 years, make them an unbeatable combination.

Contact your nearest Rish office today for details.



COEBURN, VA • 703-395-6901
BECKLEY, WV • 304-255-4111
BLUEFIELD, WV • 304-327-5124
BRIDGEPORT, WV • 304-842-3511
PARKERSBURG, WV • 304-422-8441
ST. ALBANS, WV • 304-755-3311
FROSTBURG, MD • 301-689-2211

